

# Taiwan

## UCEAP Advising Notes

### Objective

This document is an advising tool written by a Berkeley Study Abroad advisor to review program specific details that may impact a student's decision to apply for an UCEAP program. The document is **not** a summary of eligibility requirements, academic, housing, application and other logistical details freely available to students on the [UCEAP](#) and [BSA](#) website. The best source of detailed program information are the [UCEAP webpages for Taiwan](#). If any concerns you have are not addressed on the UCEAP website or this Advising Notes document, please contact the [BSA Advisor](#) for this program.

*Updated August 2024*

### Table of Contents

[Quick Links](#)

[Video & Blog Resources](#)

[Citizenship and Passport Considerations](#)

[Scholarship Opportunities](#)

[Program Considerations: National Taiwan University](#)

[Program Considerations: Chinese in Taipei](#)

[Program Considerations: Research in Taipei](#)

[Considerations for Transfer Students](#)

[Considerations for LGBTIQA+ Students](#)

[Considerations for Students with Disabilities](#)

[Considerations for Graduating Seniors](#)

[Considerations for Undocumented Students](#)

[Diversity Abroad Resources](#)

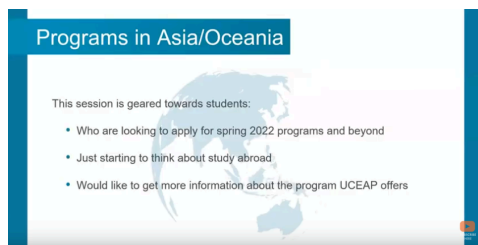
# Quick Links

Below is a summary of the 2025-2026 UCEAP Taiwan programs available to Berkeley students:

	Summer 2025	Fall 2025	Year 2025-26	Spring 2026
<b>Immersion</b>				
<a href="#">National Taiwan University</a>		X	X	X
<b>Language</b>				
<a href="#">Chinese in Taipei</a>	X			
<b>Research</b>				
<a href="#">Research in Taipei</a>	X			

# Video & Blog Resources

There are a number of videos provided by UCEAP or UC Berkeley Students to help students learn about their study abroad options. Here are some you can check out.



[Study Abroad in Asia and Oceania | UCEAP Open House | 2021](#)



[Study Abroad in China, Hong Kong, and Taiwan | UCEAP Virtual Study Abroad Fair 2021](#)



[Top 5 Reasons to Study Abroad in Taiwan | 2020](#)



[Berkeley Student at National Taiwan University | 2014](#)



[2018 National Taiwan University \(Full Version\) - NTU Campus](#)



[Day in the Life of an Exchange Student in Taiwan // National Taiwan University \(NTU\) | 2020](#)

# Citizenship and Passport Considerations

Taiwan citizens may apply to Chinese in Taipei and Research in Taipei only if you are a currently enrolled UC student at the time of application.

If you have **only** Taiwanese citizenship, you are not eligible for the National Taiwan University program. However, you are eligible to apply **if** you hold dual citizenship. Dual citizenship holders (for example, hold both Taiwan and US passports) **ARE** eligible to apply using their non-Taiwanese passport.

PRC citizens may apply to the National Taiwan University program for the Fall or Spring terms, but they are ineligible to apply for the year-long term.

If you currently hold or have ever held Taiwanese citizenship, there are important considerations for studying abroad in this program. All male citizens between the ages of 18 and 36 who were born in Taiwan or who have ever held a Taiwan passport are subject to compulsory military training by the Taiwanese government. This policy applies to dual citizens, even if you enter Taiwan on your non-Taiwanese passport. You may also be required to submit additional paperwork. You may obtain additional information from the [Taipei Economic and Cultural Representative Office](#) (TECO). Contact the BSA adviser for Taiwan if you fall in this category and are considering studying abroad in Taiwan.

Non-U.S. citizens should contact TECO now to determine visa requirements for your country of citizenship. Contact the [U.S. Citizenship and Immigration Services](#) (USCIS) if you have questions about re-entering the U.S.

Students who are in the process of applying for U.S. citizenship or making any legal name changes are **not** eligible to apply unless the changes will be completed before application to the UCEAP program. There are no exceptions to this.

**For all UCEAP Taiwan programs**, students cannot be accepted to a Taiwanese university without a valid passport. Your [UCEAP application](#) will state how long your passport must be valid after the end date of the program (typically 6 months after return) and when a photocopy of it will be due. If you do not have a passport or need a renewal, please review the Passport Information section of the [UCEAP How to Apply Page](#), and take action immediately.

# Scholarship Opportunities

All UCEAP students are encouraged to apply for a [UCEAP Scholarship](#), which offers a \$1000 award for summer programs. For more information, visit the UCEAP Scholarships page.

US Citizen Pell Grant recipients are encouraged to apply for the Gilman Scholarship, which offers a possible award of up to \$5000. For more information, visit [gilmanscholarship.org](#). Another scholarship to explore is the [Freeman-ASIA Scholarship](#).

More information on financial aid and scholarships can be found on our website:  
<http://studyabroad.berkeley.edu/finances>

Financial aid students can request a financial aid estimate for the program here:  
<https://studyabroad.berkeley.edu/finances/financial-aid-advising>

## Program Considerations– Semester & Year

**Application Note** - Qualified students will be nominated on a **‘first come first serve basis’** based on their UCEAP application submission date/time up until the program’s application deadline or until the program has filled. On the BSA website’s [Explore](#) tool, you will be able to see that application filing period for specific programs.

All students, regardless of what term they are applying for, must submit both the UCEAP and Berkeley Study Abroad applications to be considered. Please consult the [application instructions](#) and your BSA Adviser if you have questions about the application process.

### [National Taiwan University](#)

[NTU](#) provides one of the least expensive UCEAP options in Asia at one of the top-ranked research university partners with whom UCEAP works.

NTU courses taught in Mandarin are for students with native or near-native language ability. Regular NTU subject offerings that are taught in Mandarin use traditional characters. Occasionally, NTU courses will offer lectures in Chinese with textbooks and other materials in English. NTU Courses taught in English are in a range of fields and are open to all UCEAP students regardless of language ability. Students can look for courses taught in English on [NTU's website](#). UCEAP students can take one Chinese language course offered through the Chinese Language Division (CLD) at NTU.

All courses available to UCEAP students operate on the regular NTU calendar. Fall courses run from **late August to late December**, spring courses run from **mi-**

**February to mid-June**, and year courses run **from late August to mid-June**. It is not possible to make arrangements to take exams early for NTU courses. Therefore, it is not possible to depart Taiwan earlier than mid-December or early-June, respectively.

Students going to NTU in the Fall, Spring, or Year packages must complete a Medical Examination Report as part of their host university application, including a chest x-ray. This medical exam is in addition to the regular UCEAP Health Clearance (instructions will be provided after selection to the program) and can cost between \$200 and \$300 to complete at the Tang Center. The cost of the health clearance is factored into the UCEAP budget for the program, but financial aid recipients must plan carefully for pre-departure expenses that occur before the disbursement of financial aid for UCEAP. The exam can also be completed upon arrival at NTU.

## Program Considerations – Summer

**Application Note** - Qualified students will be nominated on a **‘first come first serve basis’** based on their UCEAP application submission date/time up until the program’s application deadline or until the program has filled. On the BSA website’s [Explore](#) tool, you will be able to see that application filing period for specific programs.

All students, regardless of what term they are applying for, must submit both the UCEAP and Berkeley Study Abroad applications to be considered. Please consult the [application instructions](#) and your BSA Adviser if you have questions about the application process.

### [Chinese in Taipei](#)

This program is hosted by [National Taiwan University](#) and offers intensive language study in Chinese from beginning to advanced levels. Students earn 8 semester units on the program. Please note that this program is **not** open to native Chinese speakers, because there is no coursework offered at this level.

### [Research in Taipei](#)

This program is hosted by [National Taiwan University](#) and offers a variety of research opportunities. Available departmental labs include the College of Science, College of Electrical Engineering & Computer Science, College of Engineering, College of Bio resources and Agriculture, College of Life Science, College of Public Health, and School of Veterinary Medicine. [Click here](#) for current project descriptions and the leading professors’ background and specialties.

Students earn 4 semester units for research and 2 semester units for a culture course, for 6 total semester units.

Prospective students are encouraged to accept placement in this program **only if** they are certain they will be able to participate within the lab they are assigned. Lab research placements such as this are often competitive; if you accept and later decline a placement, you may be taking an opportunity away from students who were not nominated. Research teams at NTU also count on having nominated students as part of their lab, so you are encouraged to accept the placement only if you can commit to participation in the program.

## Considerations for Transfer Students

Transfer students should review BSA's [I am a Transfer Student webpage](#) for an overview of considerations. As a general rule, transfer students are eligible to apply for study abroad programs that take place after the student has completed one term at UC Berkeley (one semester residency requirement). For example, if a student's first term at Berkeley is Fall 2024, the earliest cycle to apply is either Spring 25 or Summer 25. This is dependent on application deadlines and the program eligibility requirements. Students should consult with their academic department to confirm College and/or Major study abroad requirements and to confirm when study abroad can fit into their academic plan.

## Considerations for LGBTQ+ Students

Taiwan is included on UCEAP's [list of LGBTIQ-tolerant countries](#), which was compiled using information from the [Spartacus Gay Travel Index](#). For additional information, review BSA's [I am a LGBTQIA+ Identifying Student webpage](#) for an overview of considerations.

Information from the U.S. Department of State's [2020 Country Reports on Human Rights Practices](#) is as follows:

The law stipulates employers cannot discriminate against job seekers based on sexual orientation and prohibits schools from discriminating against students based on their gender expression, gender identity, or sexual orientation.

Activists for lesbian, gay, bisexual, transgender, and intersex (LGBTI) rights said due to victims' reluctance to lodge formal complaints, discrimination against LGBTI persons was more widespread than suggested by the number of court cases. Reported instances of violence against LGBTI individuals were rare, and police response was adequate.

In September several LGBTI advocacy and parents' groups voiced support for, while other non-LGBTI groups protested against the Ministry of Education's selection of a children's book featuring a same-sex couple for elementary-school readers.



# Considerations for Students with Disabilities

Students seeking accommodations should review BSA's [I am a Student With Disabilities webpage](#) for an overview of considerations. If you receive accommodations at UC Berkeley and would like to know if they are also available in the program abroad that interests you, it is a good idea to email your BSA adviser to inquire about your specific needs. That way, if your needs cannot be accommodated in that program, you can investigate other programs that might.

Students with emotional support animals or service animals will need to request accommodations from their UCEAP Program Specialist prior to departure on their UCEAP program. Emotional support animal accommodation requests are not guaranteed. Below are additional resources to consider:

Traveling Internationally with a Guide Dog or Service Animal

*Pros and cons, legal and health considerations for going abroad with your service animal*

<http://www.miusa.org/resource/tipsheet/serviceanimal>

10 Steps to Bring Your Service Animal or Guide Dog to Another Country

*Start planning early and consider international quarantine and vaccination laws*

<http://www.miusa.org/resource/tipsheet/10steps>

Should I Take My Guide Dog or Service Animal?

<http://www.miusa.org/resource/tipsheet/guidedogdecisions>

Caring for Your Guide Dog or Service Animal Abroad

*Learn tips for supplies to take along, climate preparations, and animal health while traveling internationally*

<http://www.miusa.org/resource/tipsheet/preparingyouranimal>

# Considerations for Graduating Seniors

If you are a graduating senior who is applying to a Spring package program, please be advised that the finals period may stretch into June or July. Returning to Berkeley to walk in a commencement ceremony is an unrealistic expectation for Spring participants. If walking in graduation is very important to you, we recommend that you apply to the [National University Singapore](#), as there is a better chance that the program will end before commencement. As an alternative to walking in a Spring ceremony, there is also a UC Berkeley "December Graduates Convocation" if you would like to have the experience of walking in graduation (not department



specific). Similarly, you can wait and walk in the following Spring departmental ceremony.

Graduating seniors participating in a spring program should ensure they are on the Spring degree list. If you are not yet on this degree list, you should contact your UC Berkeley College Adviser to petition moving your expected graduation term. However, spring grades are often not reported to UCEAP until mid-August, so your grades will not arrive in time for your degree to be processed with the spring degree list (which occurs in mid-July). You will be automatically removed from the spring degree list and placed onto the summer degree list, which is processed in October. Thus, your diploma would display a summer graduation date rather than a spring graduation date. **This policy is subject to change.** For all students, after your UCEAP grades arrive and you are waiting for the next degree list to be processed, you can request a "Certificate of Completion" from the Berkeley Registrar that can serve as "proof" of graduation.

More information can be found in the [I am a Senior page](#).

## Considerations for Undocumented Students

Berkeley Study Abroad is committed to supporting undocumented students in their pursuit of study abroad programs. The BSA Office collaborates with the [Undocumented Student Program](#) and the [East Bay Community Law Center \(EBCLC\)](#) to support undocumented or DACA students interested in studying abroad. We also partner with the Financial Aid & Scholarships Office to support students on this journey. We have sent undocumented students on Berkeley Study Abroad programs internationally and domestically since DACA's inception in 2011. The Advance Parole processing timeline can take anywhere from 10-13.5 months to process and it is highly encouraged that students interested in studying abroad reach out to the BSA office as soon as possible to discuss the next steps to submit an early application. For more information, review the [I am an...Undocumented Student](#) page.

## Diversity Abroad Resources

BSA recognizes that there are many nuances to exploring your identities abroad, and these articles may not be representative of all identities and experiences. Diversity Abroad resources, however, are a great starting place for your exploration. You can find a variety of [articles](#) to help you prepare for your study abroad experience.