

The Samsung logo is displayed in white, bold, uppercase letters within a white, horizontally-oriented oval shape. This oval is centered on a dark blue background that forms a rounded rectangular shape on the left side of the page.

**SAMSUNG**

# M3 Station Series

## USER MANUAL

External Hard Drive

### M3 Station

- HX-D101UAB · HX-D201UAB
- HX-D101UAE · HX-D201UAE
- HX-D151UAB
- HX-D151UAE

### M3 Station 3.0

- HX-D101TAB · HX-D201TAB
- HX-D101TAE · HX-D201TAE
- HX-D151TAB
- HX-D151TAE

# Read Me First

## About this Manual

Your product comes with a quick installation guide and a user's manual. Following the instructions and precautions of this manual will ensure easier and more enjoyable use of your M3 Station Series External Hard Drive.

## Quick Installation Guide

An installation guide is provided with the purchase of M3 Station Series External Hard Drive. The Quick Installation Guide explains product components and provides simple instructions on how to install the product.

## User's Manual




The User's Manual contains detailed information about features and instructions on using your M3 Station Series External Hard Drive.


## Using this Manual

Carefully read and understand the "Handling Precautions" section before using the product. Failure to follow all the instructions as outlined in the Handling Precautions section could result in damage to you or to your M3 Station Series External Hard Drive.

- Refer to the Troubleshooting section first if you experience a problem with the product.

## Icon Guide

Icon		Meaning
	<b>Precautions</b>	These must be read thoroughly before using any of the functions.
	<b>Caution</b>	This contains must-know information about functions. User must be careful.
	<b>Note</b>	This contains useful information about the functions.

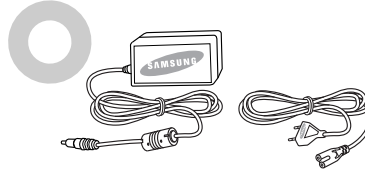
 Software and user manuals are available for download at the Samsung External Hard Drive website ([www.samsunghdd.com](http://www.samsunghdd.com)). The content of this User's Manual may change without prior notice for product improvement purposes.

# Handling Precautions

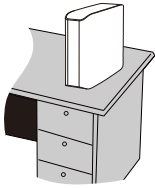
The following information serves to ensure user's safety and prevent damage to user's properties. Carefully read the information provided and use your product correctly.

## Use the rated Power adapter

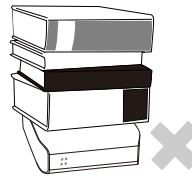
Use only the power adapter supplied with the product or approved by Samsung Electronics.



## Installation Related

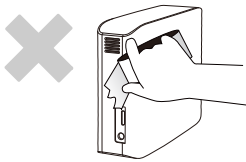


**Use the product on a flat surface.**



**Do not sit on the product and do not place a heavy object over the product.**

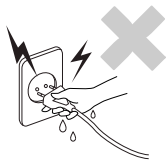
Product case or connector can be damaged and may cause a break down.



**Avoid blocking the vent at the bottom or side of the External Hard Drive.**

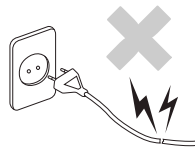
If the vent is blocked, there is a danger of damaging the External Hard Drive or overheating the inside of the product.

## Power Related



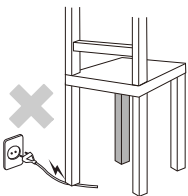
**Do not touch the main plug or power cord with hands.**

There is a danger of electric shock.



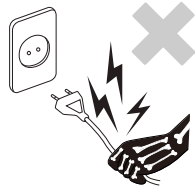
**Do not use a damaged or loose main plug or power cord or power outlet.**

There is a danger of electric shock or fire hazard.



**Do not bend the power cord excessively or do not place a heavy object over the power cord.**

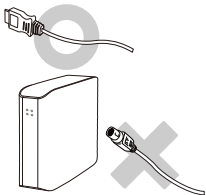
If the power cord is damaged, it may cause electric shock or fire and may increase the wrong operation.



**Do not unplug the power cord out by pulling the cable only.**

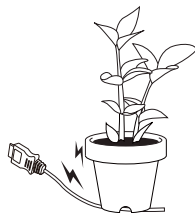
If the power cord is damaged, it may cause electric shock.

## Data Cable Usage



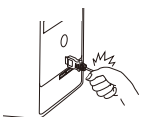
**Standardized data cable.**

This may increase the wrong operation and may cause a malfunction.



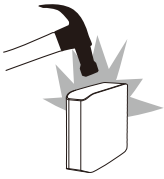
**Do not severely bend the data cable and do not place a heavy object over the data cable.**

If the data cable is damaged, it may cause a malfunction.



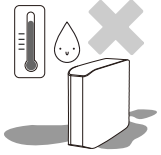
**Do not unplug the data cable by severely pulling the cable.**

This may damage connector on the product and may cause a problem with the product.



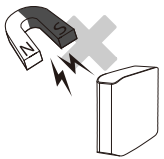
## Shock

The External Hard Drive is very portable and you may easily drop it. Take care not to drop and tip the product while carrying the External Hard Drive. If you make an impact on the External Hard Drive, it may cause bad sectors on the disk. Bad sectors can cause various and potentially read/write errors.



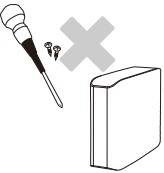
## Humidity

If you use the product in places exposed to humidity, it may danger of electric shock. In addition, prolonged exposure to moisture can corrode various parts and components.



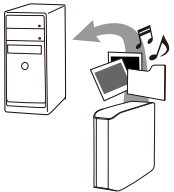
## Magnets

Magnetic objects can cause various types of damage to the External Hard Drive, including data damage. Keep magnets and magnetic objects away from the External Hard Drive.



## Disassembly and Label Removal

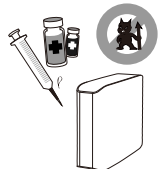
For repair, please visit the designated (samsung) customer service center. Unauthorized disassembly, repair, or reform of the product and unauthorized removal of the labeling will void your warranty.



## Always Backup your Important Data

The external drive manufacturer does not guarantee data stored in the external drive and will not assume responsibility for any mental or material damage incurred during data recovery.

- Backup : Storing the original and a copy on two or more separate and accessible storage media.



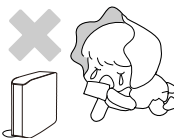
## Regular Virus Scanning

Frequently scan the device for viruses and protect the External Hard Drive from virus infection.



## Cleaning the product

Never use cleaning fluid or similar chemicals. Do not spray cleaner directly on the product. It may cause discoloration and deformation of the product.



## Custody Related

Keep the product and accessories out of the reach of children. It may cause personal injuries and problem.

## Safely Remove Hardware

Always use the Safely Remove Hardware feature before shutting down the External Hard Drive or disconnecting the USB cable and power cable.

**1MB=1,000,000bytes / 1GB=1,000,000,000bytes / 1TB=1,000,000,000,000bytes**

Actual accessible capacity may vary from advertised capacity due to formatting and partitioning of the External Hard Drive, as well as due to your computer's operating system.

# Table of Contents

<b>Read Me First</b>	<b>2</b>	About this Manual
	<b>2</b>	Quick Installation Guide
	<b>2</b>	User's Manual
	<b>2</b>	Using this Manual
	<b>2</b>	Icon Guide
<b>Handling Precautionst</b>	<b>3</b>	Use the reted Power adapter
	<b>3</b>	Installation Related
	<b>3</b>	Power Related
	<b>3</b>	Data Cable Usage
	<b>4</b>	Shock
	<b>4</b>	Humidity
	<b>4</b>	Magnets
	<b>4</b>	Disassembly and Label Removal
	<b>4</b>	Always Backup your Important Data
	<b>4</b>	Regular Virus Scanning
	<b>4</b>	Cleaning the product
	<b>4</b>	Custody Related
	<b>4</b>	Safely Remove Hardware
<b>Specifications</b>	<b>6</b>	System Requirements
	<b>7</b>	Components
	<b>7</b>	Overview
<b>Connecting your M3 Station Series</b>	<b>8</b>	Installation
	<b>9</b>	Windows
	<b>10</b>	Macintosh
<b>Using your M3 Station Series</b>	<b>11</b>	Copying / Moving Files
	<b>11</b>	Removable Disk Method
<b>Safely Removing your M3 Station Series</b>	<b>13</b>	For Windows
	<b>14</b>	For Macintosh
<b>Troubleshooting</b>	<b>15</b>	FAQ
<b>Appendix</b>	<b>16</b>	Partitioning and Changing File System Type
	<b>16</b>	Reformat to FAT32
	<b>16</b>	Reformat to NTFS
	<b>16</b>	Format in Macintosh
	<b>17</b>	Product Certifications
	<b>17</b>	FCC
	<b>18</b>	Warranty Information

# Introduction

The M3 Station Series External Hard Drive is a high-performance External Hard Drive that supports USB \*. Unlike conventional desktop disk drives, the M3 Station Series External Hard Drive makes it possible for you to instantaneously add greater storage capacity to your system without having to take the computer apart.

This means that your M3 Station Series External Hard Drive comes fully partitioned and formatted for your use and you can instantly access to the drive by simply plugging it into your computer through a USB port. Additional setting are not necessary.

## Specifications

Category	M3 Station Series USB 2.0	M3 Station Series USB 3.0
Interface	USB 2.0	USB 3.0
Transfer Rate	480 Mbps Max.	5 Gbps Max.
Power	DC +12V, 2.0A	
Operating System	Windows XP / Vista / 7	
	Mac OS X 10.4.8 or Later	
Hard Disk Capacity	1TB , 1.5TB , 2TB	
Dimensions (W x H x L)	47mm X 130mm X 180.6mm	
Color	Noble Begie / Brown Black	
Format System	NTFS	

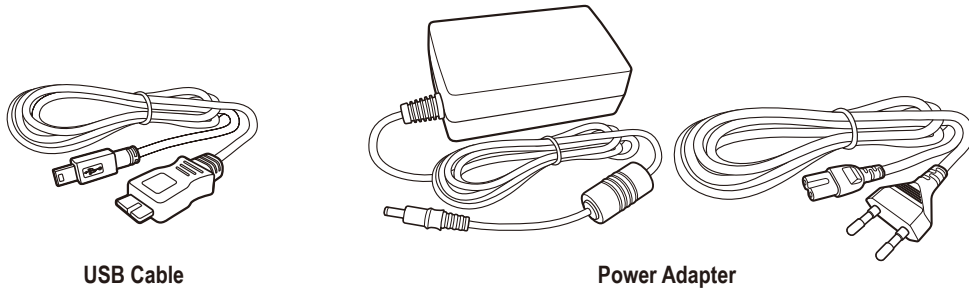
## System Requirements

- PC : Windows XP / Vista / 7
- Macintosh : Mac OS X 10.4.8 or Later
- Upgrade your operating system to the latest version to enjoy better performance and reliability.

\* M3 Station : USB 2.0

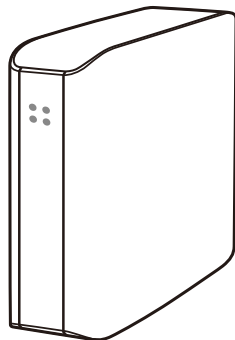
M3 Station 3.0 : USB 3.0

# Components



USB Cable

Power Adapter



Samsung M3 Station Series External Hard Drive

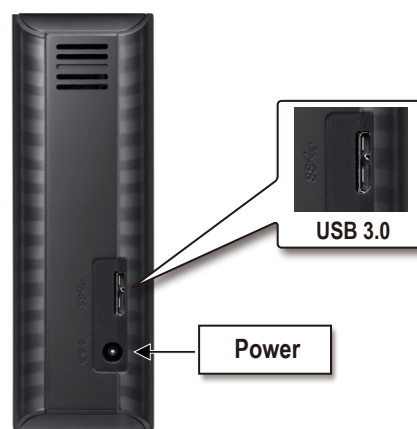


Quick Start Guide

※ When you purchase a M3 Station Series External Hard Drive, make sure that all components have been included in your product package.

# Overview

There are ports to connect various cables including USB on the backside of M3 Station Series



## LED Description

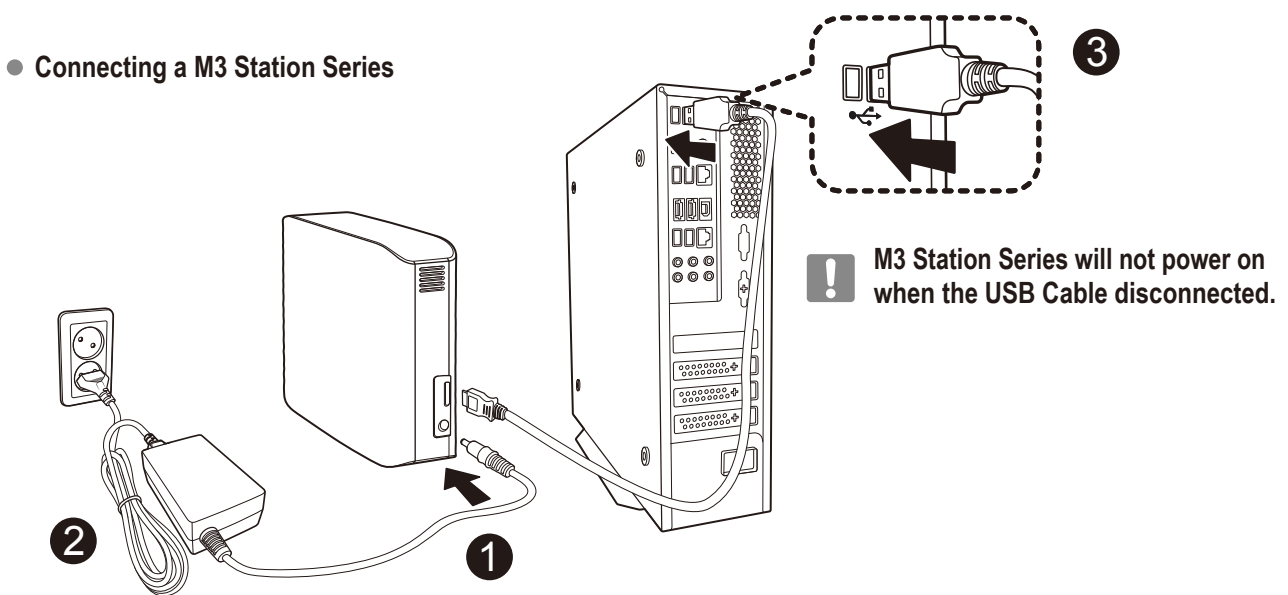
- 1) Standby Status : Steadily lit LED
- 2) Read/Write in Progress : Blinking LED

# Connecting your M3 Station Series

## Installation

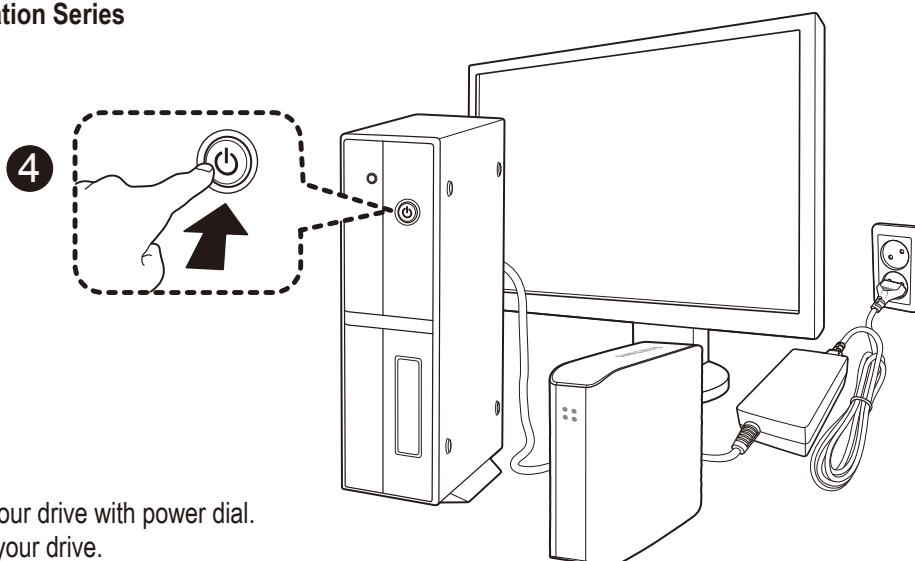
Verify that the computer meets the minimum system requirements as outlined in #System Requirements.

Connect the Data cable to your desktop/laptop computer as shown in the figure below.



■ Plug in the power adapter and connect the USB cable to the corresponding port on your desktop PC or notebook PC.

● **Power on a M3 Station Series**



> To use the M3 Station 3.0 model at its Maximum speed, you need a PC or a Host Card that supports USB 3.0 interface.



## Windows

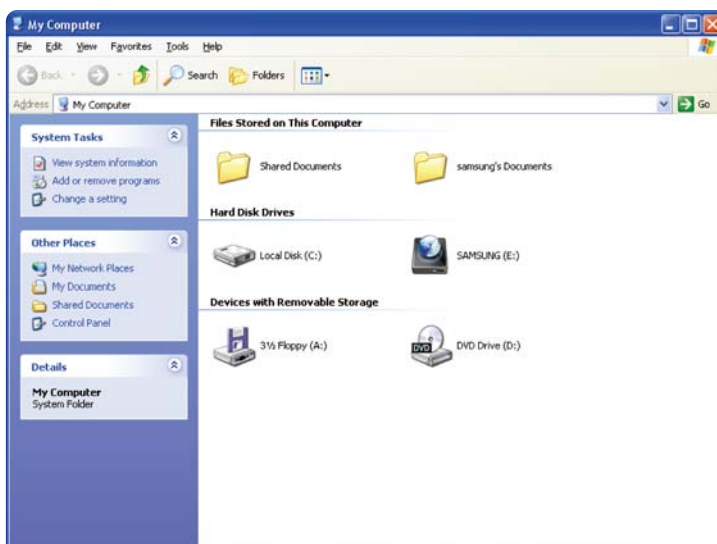
When you connect the M3 Station Series External Hard Drive to the computer a device icon will appear in the system tray at the lower right corner of the screen.

- **System Tray indicating an external device**



The operating system will recognize and display “Samsung” drive under “My Computer.”

- **In the Windows Explorer, you will see a new Samsung drive**

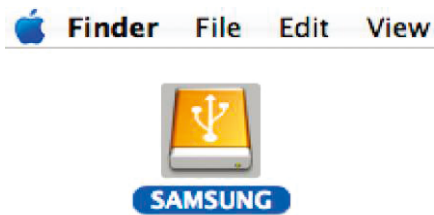


You are now ready to use the Samsung M3 Station Series External Hard Drive.

## Macintosh

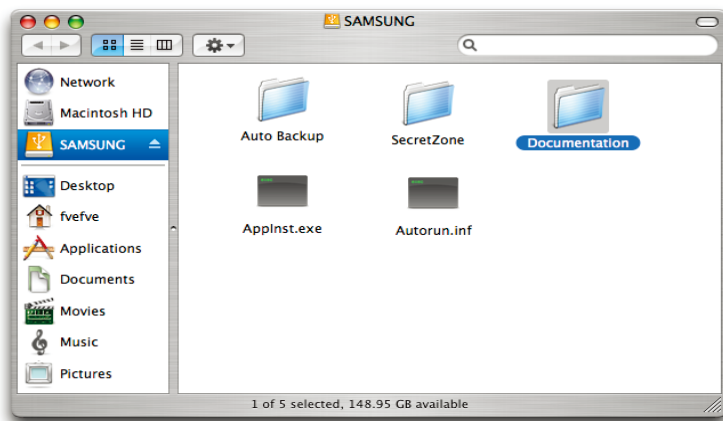
Connect your M3 Station Series External Hard Drive to the computer. Your Macintosh operating system will then generate a SAMSUNG.

- **Macintosh External Hard Drive connection icon**




After clicking the SAMSUNG icon, the following folder will appear.

- **Macintosh Folders**



You are now ready to use the Samsung M3 Station Series External Hard Drive.

 Samsung provides Samsung NTFS 3G driver which can be used to write data on NTFS-format External Hard Drives on Mac OS. Samsung NTFS 3G driver can be downloaded from the Samsung website. (<http://www.samsunghdd.com> → Support → Download → External HDD)

# Using your M3 Station Series

## Copying / Moving Files

Now that you have successfully installed your new M3 Station Series External Hard Drive, you copy or move files or whole folders from your new M3 Station Series to your computer and vice-versa.



**It is important to understand the difference between Copy and Move.**

**Copy** : is to make a duplicate folder or file and store it so that you have two copies.

**Move** : is to take a folder or file from one location and put it into another.

WHEN YOU MOVE A FOLDER OR FILE, YOU NO LONGER HAVE A BACKUP COPY.

Copy and paste files from the computer to the M3 Station Series External Hard Drive (Removable Disk Method).

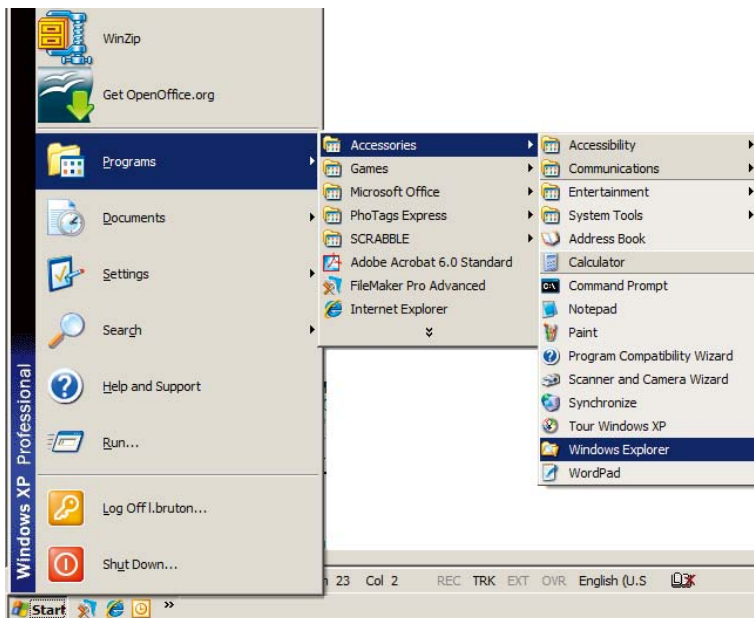
## Removable Disk Method

For the purposes of this manual, we will make a copy of the Temp folder on the C drive of your computer and copy it to the M3 Station Series External Hard Drive.

From the Windows Desktop click:

**Start** → **Programs** → **Accessories** → **Windows Explorer**

### ● Getting to the Windows Explorer



From the Windows Explorer, you will see various drive letters; A, C, your C drive is your local Hard Drive.

The M3 Station Series Drive will most likely be the E drive however, it could be any drive letter.

For the purposes of this manual, we will assume that the M3 Station Series drive is the E drive.

As well, for practice copying folders and files, we will copy the Temp folder onto the M3 Station Series drive.

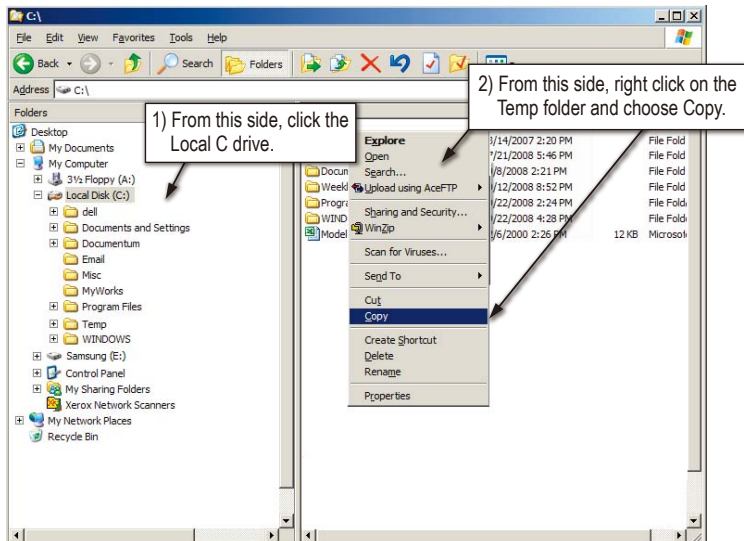
From the Windows Explorer screen:

Click Local Disk C

From the right-hand pane:

Right-click the Temp folder → Click Copy

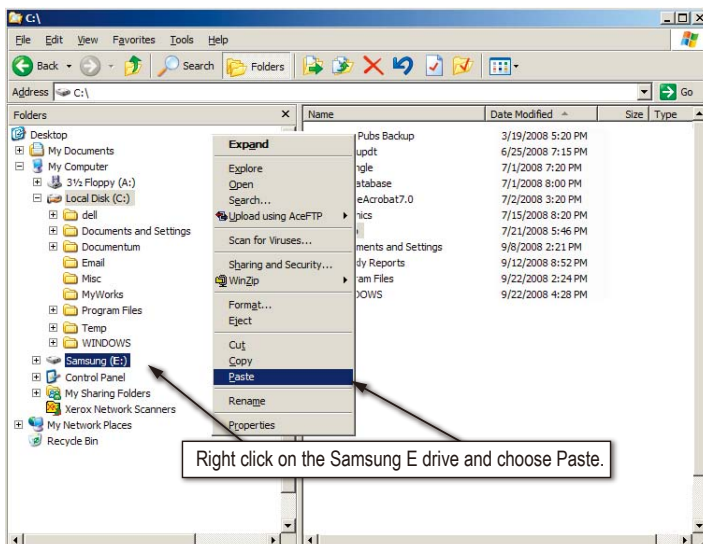
- When you Right-Click on a file or folder, you get another menu.



Now, we will copy the Temp folder from the Local C drive, to the Samsung E drive.

From the left pane in the Windows Explorer : Right Click Samsung E → Click Paste

- Using a Right-Click again, we can paste the Temp file onto the M3 Station Series drive.



Do not disconnect the data cable between the PC and the M3 Station Series during file transfer. This could cause data loss and damage to the M3 Station Series.

# Safely Removing your M3 Station Series

## For Windows

Right-click the device icon from the system tray at the lower right corner of your screen.

- The taskbar is located at the bottom-right of the screen.



Click "Safely Remove Hardware."

- The 'Safely Remove Hardware' prompt will list every device that is attached to your system.



Click 'Samsung M3 Station Series USB Device'

- This prompt will list all of the Mass Storage Devices like your Local Hard drive and your M3 Station Series Hard drive



When you see the "Safely Remove Hardware" message, you may safely remove the device from the system.

## For Macintosh

Click the External Hard Drive icon and select [Eject "SAMSUNG."]

- For the Macintosh click the USB icon and choose Eject "SAMSUNG"



This safely disconnects the drive. It is now safe to detach the drive from the computer.



Do not disconnect the data cable between the PC and the M3 Station Series during file transfer. This could cause data loss and damage to the M3 Station Series.

# Troubleshooting

- Check the Data cable connection.
- Check the LED light on the External Hard Drive.
- Check the power supply to M3 Station Series External Hard Drive.
  - Ticking noise is an indication of insufficient power.
- If the drive is not being recognized, try plugging it into a different USB port.

## FAQ

### Q1. File transfer takes too long.

#### A1. - USB 2.0

You will experience slow file transfer speeds if your computer does not support USB 2.0 or if you do not connect M3 Station Series External Hard Drive to a USB 2.0 port. Try connecting M3 Station Series External Hard Drive to a different port or, if your computer does not support USB 2.0, purchase a separate USB 2.0 port.

#### - USB 3.0

To use the M3 Station 3.0 model at its Maximum speed, you need a PC or a Host Card that supports USB 3.0 interface and USB 3.0 Cable.

### Q2. The actual storage capacity of M3 Station Series External Hard Drive is different than the capacity shown on the packaging.

**A2.** Type of file system used for the drive, partitioning arrangement, type of operating system, and various other factors can affect the actual storage capacity displayed by your computer.  
(1MB=1,000,000bytes and 1GB=1,000,000,000bytes. 1TB=1,000,000,000,000bytes)

### Q3. I connected my M3 Station Series External Hard Drive, and the computer seems to recognize it, but the drive won't show up under Windows Explorer.

**A3.** M3 Station Series External Hard Drive is by default formatted to NTFS and will work normally when you connect it to your computer. However, if the partition has been erased or the file system has been changed to a one that's not recognized by Windows, the drive will not appear under Windows Explorer. Try formatting the drive to FAT32 or NTFS.  
(Caution : Formatting will erase all data stored in the drive.)

### Q4. I am using Windows XP and cannot format the drive to FAT32.

**A4.** Windows operating systems that followed Windows NT have limited FAT32 formatting to 32GB. Therefore, if you wish to format your M3 Station Series External Hard Drive to FAT32, you will need to download a format utility from our website.  
(Caution : Formatting will erase all data stored in the drive. We recommend that you back up your data before proceeding.)

### Q5. My computer will not boot up properly.

**A5.** If you boot up your system with M3 Station Series External Hard Drive connected to the computer, it's possible that your system's BIOS is attempting to boot from the External Hard Drive.  
Change the BIOS booting sequence or disconnect the External Hard Drive from the system and then try booting again.

### Q6. I am using a Mac, and I can't copy files.

**A6.** If the drive has been formatted to NTFS, data stored in the drive can only be read by Mac systems.  
To use the drive on Mac OS X operating systems, use Samsung NTFS 3G Driver or reformat your drive.  
Samsung NTFS 3G driver : (Refer to the 10 page)  
Reformat : (Refer to the 16 page)

# Appendix



**WARNING** – PARTITIONING AND FORMATTING YOUR DRIVE WILL PERMANENTLY ERASE ALL THE FILES ON THE DRIVE. DO NOT ATTEMPT TO DO THIS UNLESS ALL OF YOUR FILES HAVE BEEN BACKED UP AND CHECKED FOR RELIABILITY AND READABILITY.

## Partitioning and Changing File System Type

It's possible to partition your M3 Station Series External Hard Drive and change the file system type.

- Reformat to FAT32
- Reformat to NTFS
- Reformat in Macintosh

## Reformat to FAT32

- Use Samsung Format Utility to format your M3 Station Series External Hard Drive to FAT32.  
(Samsung Format Utility is a Windows application and is available for download from Samsung's online Customer Support page.)

## Reformat to NTFS

Following describes formatting to NTFS in Windows XP:

- Connect M3 Station Series External Hard Drive to the computer.
- Click "Start" from the lower left corner of your screen.
- Right-click "My Computer" and then select "Manage."
- From the "Computer Management" tool, select "Disk Management."
- Right-click the drive you wish to format and then select "Delete Partition."
- Once drive partition has been deleted, right-click the drive you wish to format and then select "New Partition" as shown in the diagram below.
- From Create Partition Wizard, select "Primary Partition" and then enter the desired size of the partition.
- From the "File System" menu, select "NTFS" and format.

## Format in Macintosh

Following describes formatting in Mac OS X:

- Launch Mac OS X's "Disk Utility" tool.
- Open the main drive folder from the desktop. Open the "Applications" folder and then the "Utilities" folder.
- Select the "Disk Utility" file.
- Select the drive you wish to reformat.
- Select the "Erase" menu.
- Select "Mac OS Extended (Journaled)" from "Volume Format" menu and then Click "Erase" button
- Once formatting is complete, the drive will appear on your desktop.



## Product Certifications

- CE** (European Union/Community)
- VCCI** (Voluntary Control Council for Interference by Information)
- FCC** (Federal Communications Commission)
- C-TICK**
- KCC** (Korea Communications Commission)
- BSMI** (Bureau of Standards, Metrology and Inspection)
- cUL** (C- Underwriter's Laboratories, Inc)
- TUV** (Technischer Überwachungs Verein)
- CB**



This marking on the product, accessories or literature indicates that the product and its electronic accessories (e.g. charger, headset, USB cable) should not be disposed of with other household waste at the end of their working life. To prevent possible harm to the environment or human health from uncontrolled waste disposal, please separate these items from other types of waste and recycle them responsibly to promote the sustainable reuse of material resources.

Household users should contact either the retailer where they purchased this product, or their local government office, for details of where and how they can take these items for environmentally safe recycling.

Business users should contact their supplier and check the terms and conditions of the purchase contract. This product and its electronic accessories should not be mixed with other commercial wastes for disposal.

## FCC

	<p><b>CAUTION</b> : Changes or modifications not expressly approved by the part responsible for compliance could void the user's authority to operate the equipment.</p>
<p><b>Class B</b></p>	<p><b>Note</b> : This equipment has been tested and found to comply with the limits for a Class B digital device, pursuant to part 15 of the FCC Rules. These limits are designed to provide reasonable protection against harmful interference in a residential installation. This equipment generates uses and can radiate radio frequency energy and, if not installed and used in accordance with the instructions, may cause harmful interference to radio communications. However, there is no guarantee that interference will not occur in a particular installation. If this equipment does cause harmful interference to radio or television reception, which can be determined by turning the equipment off and on, the user is encouraged to try to correct the interference by one or more of the following measures:</p> <ul style="list-style-type: none"> <li>- Reorient or relocate the receiving antenna.</li> <li>- Increase the separation between the equipment and receiver.</li> <li>- Connect the equipment into an outlet on a circuit different from that to which the receiver is connected.</li> <li>- Consult the dealer or an experienced radio/TV technician for help.</li> </ul>

---

# Warranty Information

The following limited warranty applies to the Samsung External Hard Drive but does not supersede regional and national laws and regulations.

## Limited Warranty

Samsung makes the following limited warranties during the warranty period: (a) the Products will function properly under normal use; (b) the Products will be free from defects in materials or workmanship; (c) the Products will conform to the published specifications; and (d) the Products will conform to any additional specifications agreed to in writing by the parties.

Samsung warranties do not cover any problem that is caused by (a) commercial use; accident; abuse; neglect; shock; electrostatic discharge; heat or humidity beyond product specifications; improper installation; operation; maintenance or modification; or (b) any misuse contrary to the instructions in the user's manual; or (c) lost passwords; or (d) malfunctions caused by other equipment.

Our limited warranties are void if a product is returned with removed, damaged, or tampered labels or any alterations (including removal of any component or external cover). Our warranties do not cover data loss – back up the contents of your drive to a separate storage medium on a regular basis. Also, consequential damages; incidental damages; and costs related to data recovery, removal and installation are not recoverable under our warranties.

## Warranty Period

The warranty period for product is three (3) years from the documented date of purchase from Samsung or a Samsung' authorized reseller.

## Customer Service

To request warranty service, please contact the place of purchase, or visit our web site ([www.samsunghdd.com](http://www.samsunghdd.com)) for information on obtaining service or an RMA (Return Material Authorization) number. Submit your phone number, e-mail, address, name, product model, and serial number(s) and an RMA number with all pertinent information will be provided to you for returning product to Samsung. When you return the product to Samsung, the product must be properly packaged in original packing with a traceable forwarder and freight prepaid to the return address listed on the RMA. Remember to write the RMA number on the out side of box, or the shipment will be refused and returned to you at freight collect.

Samsung, or an authorized Samsung service center, will replace your product with a functionally equivalent product. Samsung will not return your original drive and data recovery is not included.

It is highly recommended that you backup your data. Once your drive is received at Samsung, the ownership of the product and all content therein will be transferred to Samsung.

Please contact Samsung with any comments or inquiries at [www.samsunghdd.com](http://www.samsunghdd.com)



**Samsung Electronics Co., Ltd.**

STORAGE SYSTEM DIVISION

HEAD OFFICE: 416, MAETAN-3 DONG, YEONGTONG-GU, SUWON SI, GYEONGGI-DO, KOREA, 443-742

FAX : 82-54-479-5801

**Copyright**

Samsung Electronics reserves all copyrights to the content of this manual. Copyright laws prohibit reproduction of this manual in part or whole by any third party without the explicit consent of Samsung Electronics.

Samsung Electronics does not assume any patent responsibility for the use of information contained in this manual.

**Disclaimer**

This user's manual has been subjected to thorough reviews and verifications to ensure accuracy of its content and contains information that's pertinent to the model and series it describes at the time of publication. However, content of this manual and/or product specifications are subject to change without prior notice and with no direct or indirect liability on Samsung Electronics' part concerning such change.