



OWNER'S MANUAL

RVMASTER

POWERED BY  BM PRO



TEAMBMPRO.COM



BM PRO

POWERING YOUR ADVENTURES

With over 50 years' experience in power solutions combined with manufacturing and design facilities in Melbourne, Australia, BM PRO are the leading experts in RV power and control management.

Inspired by the great outdoors, we have created a range of rugged, smart and reliable products to power your adventures.

Our range of battery, power and RV management control systems gives you peace of mind when you are on the road, so that you can relax in even the most far flung destinations, knowing you have control over your power needs.

To learn more about the BM PRO range of products, please visit our website teambmpro.com



SAFETY PRECAUTIONS

Please read the Safety Precautions before installing or using the RVMaster.

Be sure to observe all precautions without fail. Failure to observe these instructions properly may result in personal damage, or personal injury which depending on the circumstances may be serious and cause loss of life.



WARNING



Correct installation is the most critical factor in ensuring the safe use of the RVMaster. If every consideration of these instructions has been satisfied, the RVMaster will be safe to operate.



Do not drop or vigorously shake the product as this may cause damage. Do not shock the product or its accessories as this may cause the product to fail, catch fire or explode.



Stay away from magnetic equipment. Radiation may erase the information stored on this product causing it to become inoperative.



Electricity and water do not mix. Keep this product and your battery dry and do not expose it to water or water vapor. Do not operate this product or battery near any sort of liquid. Do not operate this product with wet hands.



Do not use this product in environments that are excessively hot, cold, dusty or humid or where it will be exposed to magnetic fields or long periods of sunshine. Such exposure may cause the product or your battery to fail, catch fire or explode.



Clean the housing of this product lightly with a dry or moist cotton cloth. Do not use alcohol, thinners, benzene or any other chemical cleaner.



The RVMaster is a high precision electronic product. It contains no user-serviceable parts inside. Do not try to dismantle, modify or repair it yourself. Disassembly, service or repair by an unauthorized person will void the warranty.



Before using this product, check that the cable connections to the battery are of the correct polarity.



Do not install this product in the same compartment where flammable materials such as petrol are stored.



Product specifications are subject to change and improve without notice.

INFORMATION FOR THE USER

This device complies with Part 15 of the FCC Rules, and Innovation, Science and Economic Development Canada's licence-except RSS(S). Operation is subject to the following two conditions:

1. This device may not cause harmful interference, and
2. This device must accept any interference received, including that may cause undesired operation.

WARNING

Any changes or modification not expressly approved by BMAPRO could void compliance of the product and the user's authority to operate this equipment.

Le présent appareil est conforme aux CNR d'Innovation, Sciences et Développement économique Canada applicables aux appareils radio exempts de licence. L'exploitation est autorisée aux deux conditions suivantes:

1. L'appareil ne doit pas produire de brouillage;
2. L'appareil doit accepter tout brouillage radioélectrique subi, même si le brouillage est susceptible d'en compromettre le fonctionnement

AVERTISSEMENT

Tout changement ou modification non expressément approuvé par BMAPRO pourrait annuler la conformité du produit et le pouvoir de l'utilisateur d'utiliser cet équipement.

This equipment has been tested and found to comply with the limits for a Class B digital device, pursuant to Part 15 of the FCC Rules. These limits are designed to provide reasonable protection against harmful interference in a residential installation. This equipment generates, uses and can radiate radio frequency and energy and, if not installed and used in accordance with the instructions, may cause harmful interference to radio communications. However, there is not guarantee that interference will not occur in a particular installation. If this equipment does cause harmful interference to radio or television reception can be determined by turning the equipment off and on, the user is encouraged to try to correct the interference by one or more of the following measures:

- Reorient or relocate the receiving antenna
- Increase the separation between the equipment and receiver
- Connect the equipment into an outlet on a circuit different from that to which the receiver is connected
- Consult the dealer or an experienced radio/TV technician for help.

CONTENTS

SAFETY PRECAUTIONS	4
INFORMATION FOR THE USER	5
ABOUT THE RVMMASTER	8
CONTROLLER	8
NODE	8
SWITCH (MODEL DEPENDENT)	8
SMARTCONNECT	8
RVMMASTER SYSTEM DIAGRAM.	9
CONTROLLER	10
DESCRIPTION OF PARTS	10
MENU FUNCTIONS (MODEL DEPENDENT)	12
CONNECTING TO THE INTERNET.	13
UPDATING THE CONTROLLER	13
THE RVMMASTER APP	14
COMPATIBLE DEVICES	14
PAIRING TO THE NODE	14
CLEARING THE NODE	16
CONNECTING TO THE BMPRO CLOUD (IF EQUIPPED)	18
WINEGARD	22

MANUAL PART 037291
REV 7.0

Designed by BMPRO, one of Australia's leading power solution experts, the BMPRO product range is proudly designed and manufactured in Melbourne, Australia, and represent a high-quality product that will provide years of service.



Copyright © 2022

DISCLAIMER BMPRO accepts no liability for any loss or damage which may occur from the improper or unsafe use of its products. Warranty is only valid if the unit has not been modified or misused by the customer.

OPERATING THE RV FROM THE RVMMASTER APP 24

RVMMASTER APP HOME SCREEN 24

TANKS SCREEN 25

MOTORS SCREEN 26

CLIMATE SCREEN (MODEL DEPENDENT) 29

LIGHTS SCREEN 30

ENERGY CENTER 30

SOLAR CONTROLLER 33

FANS AND VENTS SCREEN 34

GENERAL SETTINGS. 35

NODE 38

FIRMWARE UPDATES 38

SWITCH 39

REPLACING THE BATTERY IN YOUR SWITCH 39

FAQS AND TROUBLESHOOTING 41

CONTROLLER AND APP 41

PAIRING WITH THE NODE 46

SWITCH 47

SPECIFICATIONS. 48

LIMITED WARRANTY TERMS AND CONDITIONS 50

ABOUT THE RVMaster

The RVMaster brings smart home technology to your RV, taking control and management of your RV to new horizons!

CONTROLLER

The Controller is a sleek, wall-mounted controller that gives you the freedom to monitor and control multiple RV functions, all from one convenient location in your RV.

With a user-friendly, easy to understand app for Android and iOS, the RVMaster App brings information to your fingertips and allows monitor and control of your RV from up to 3 personal devices.

Monitor: Water Tanks, Temperature, Battery and Fuel

Control: Lighting, Slide-Outs, Awnings, Climate (model dependent), Generators plus Auto Generator Start and more

NODE

The heart of the RVMaster, the Node is a power and RV management system that powers and monitors your RV features and accessories.

The Node communicates via Bluetooth with the Controller, Switch and even your own smartphone, to receive the commands to control power to all your RV features and accessories.

SWITCH (MODEL DEPENDENT)

Available in three types of configurations, the Switch provides additional control of RV features and accessories.

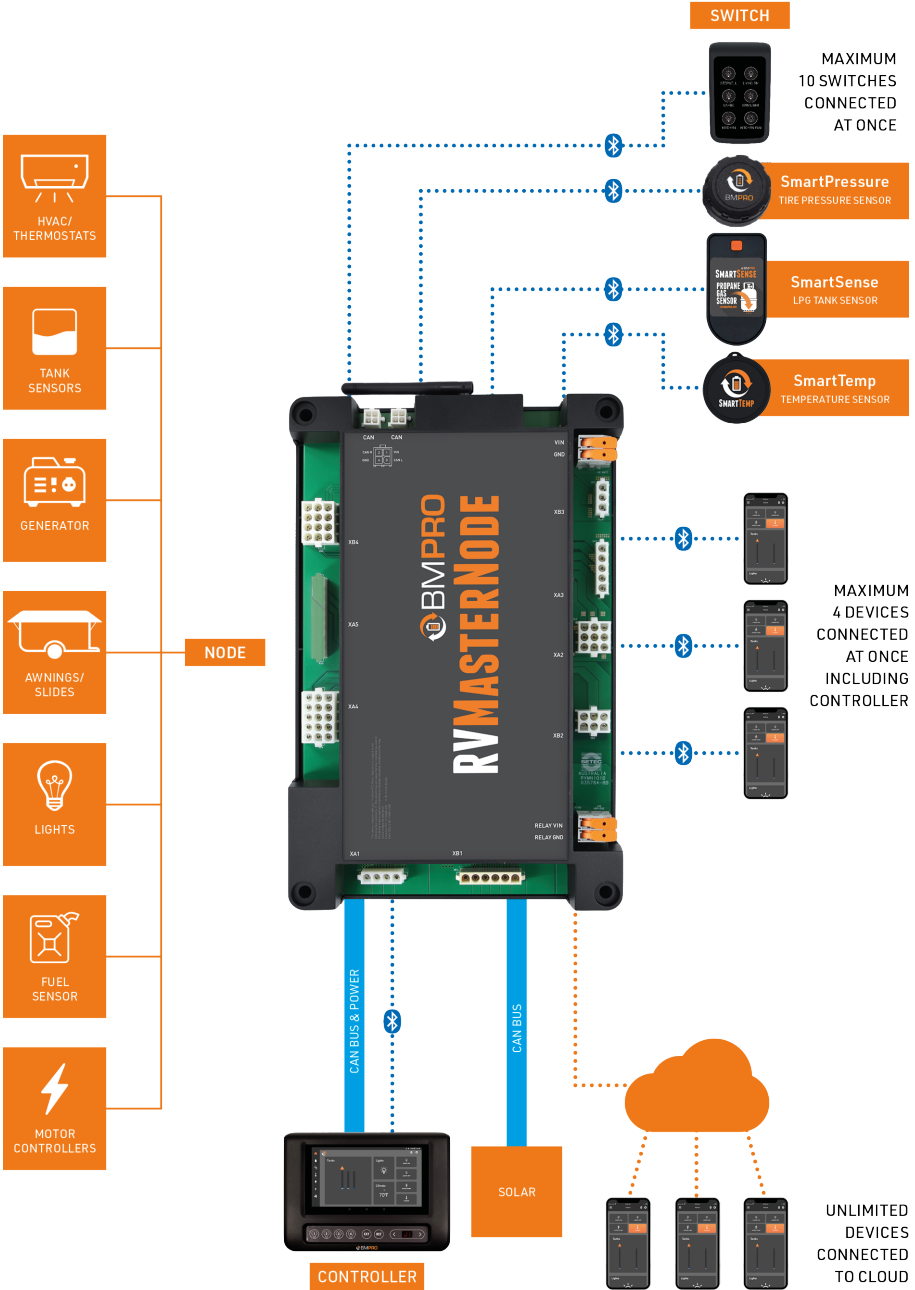
SMARTCONNECT

RVMaster models built in 2021 or later are **SmartConnect** ready!

With SmartConnect, you can remotely control various aspects of your caravan, such as tire pressure, propane tank levels and RV temperatures through the Controller or RVMaster App by using a range of Bluetooth sensors connected to RVMaster.

For more details, refer to teambmpro.com/products/smartconnect

RVMMASTER SYSTEM DIAGRAM



CONTROLLER

DESCRIPTION OF PARTS

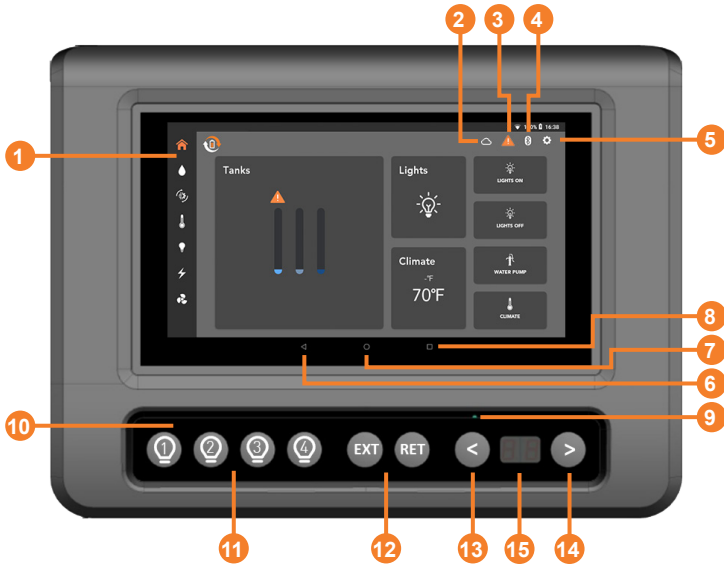


Figure 1: The Controller

1 CONTROLLER TOUCHSCREEN

2 CLOUD ICON

Appears only if the Controller is logged in to the BMPRO cloud.

3 WARNING ICON

Appears if the power cord has been connected to a faulty power source. Tap the icon for more information.

4 BLUETOOTH ICON

Appears only if the Controller is paired to the Node.

5 SETTINGS ICON

Access to the RVMaster App General Settings.

6 RETURN BUTTON

Navigate to the previous page.

7 MAIN SCREEN BUTTON

Navigate to the Controller's tablet Android screen.

8 RECENT APPLICATIONS BUTTON

Display a list of recently used/background applications on the tablet.

9 RESET PIN HOLE

To reset the Controller. Reset the Controller by inserting, for example a paper clip, in the reset pin hole.

10 CONTROL PANEL (MODEL DEPENDENT)

To provide quick access to lights and motor operation while the Controller is starting up.

Any button press on the Control Panel will turn the tablet on if it has turned off.

11 LIGHTS (MODEL DEPENDENT)

Turn lights on and off for your:



Living Room



Kitchen



Bath Ceiling



Bed Ceiling

12 MOTOR OPERATION (MODEL DEPENDENT)

To extend (EXT) and retract (RET) motors.

These buttons are also used during the pairing process between the Node and various devices such as the Controller or smart phone.

As a safety precaution, motor control in 2022 model year RVMaster units will only operate if the engine is running and the park brake is set.

13 14 NAVIGATION BUTTONS (MODEL DEPENDENT)

Press either key to gain access and navigate through menu functions available from the Control Panel.

Press > to navigate forward and < to navigate back through the menu functions.

For more information on available functions, see **Menu Functions**.

15 MENU DISPLAY (MODEL DEPENDENT)

MENU FUNCTIONS (MODEL DEPENDENT)

The menu functions on the Control Panel allows you to operate various motors, quickly turn power off to loads and pair to or clear the Node.



Awnings

Navigate to the desired awning, then press EXT or RET to operate.



Bunk-Lifts

Navigate to the desired bunk-lift, then press EXT or RET to operate.



Jacks

Navigate to the desired jack, then press EXT or RET to operate.



Slideouts

Navigate to the desired slideout, then press EXT or RET to operate.

As a safety precaution, slideout control will be disabled if the vehicle's ignition is running and the park break is not in use.

For more information, see the **Motors Screen** section.



OF

To turn off all loads, such as lights and fans connected to the Node.

The Controller will also turn off. The OF function does not shut down generators connected to the Node.

Navigate to the OF function, then press EXT to confirm that power to all accessories should be turned off.

The Controller can be turned back on by pressing any of the Light buttons on the Control Panel.



PA

To pair the Node with the Controller or your own smart phone, or to clear the Node of any pairings.

For more information, see **Pairing to the Node** and **Clearing the Node**.

CONNECTING TO THE INTERNET

The Controller has Wi-Fi capabilities to connect to the internet and download the latest app updates.

For more information, see **FAQs and Troubleshooting**.

UPDATING THE CONTROLLER

To automatically receive the latest updates for the RVMaster App, connect your Controller to the internet and log in to your Google account.

You can also get the latest updates direct from the Google Play Store. Just search for RVMaster in the Google Play Store and then press **Update**.

For more information, see **FAQs and Troubleshooting**.

THE RVMaster APP

Download the RVMaster App and enjoy the freedom to monitor and operate your RV's on-board features and accessories, on-the-move, from your own smartphone or tablet.

COMPATIBLE DEVICES

The RVMaster App is compatible with Android 4.4 or later and iOS 11 or later.



PAIRING TO THE NODE

Pairing your Controller or your own smartphone or tablet to the Node is done in two easy steps. The RVMaster App will guide you through the pairing process.

WARNING

The Controller will have been paired to your Node at the factory. You should only need to pair your own device or smartphone to the Node.

While the Node can be paired to a total of four devices (including the Controller), you can only pair one device at a time to the Node.

1. Using the < or > button on the Controller, navigate to the 'PA' menu item.



Figure 2: Use < or > to navigate to the 'PA' menu item

2. When 'PA' appears on the display, press the EXT button to start the pairing process to the Node. 'PA' will blink during the pairing process.



Figure 3: Press EXT to pair

Congratulations, you are now connected!

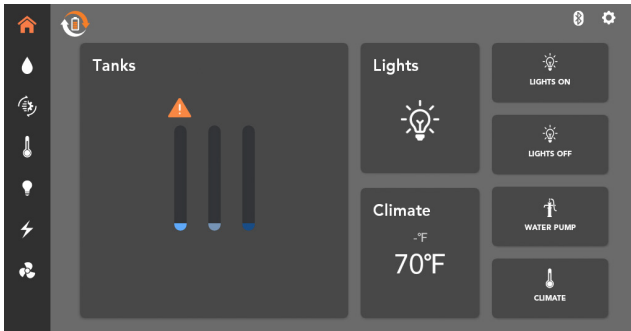


Figure 4: Once connected, the RVMaster App will return to the Home Screen

If you are having trouble connecting, see **FAQs and Troubleshooting** for more help.

CLEARING THE NODE

The Node can pair to a total of four devices, the Controller plus three other smartphones or tablets. When attempting to pair, if the Node is already paired to four devices, or if other issues prevent pairing to the Node, the Menu Display will show '--'.



Figure 5: Node cannot connect to device. Clear memory to connect to a new device.

In this case, to pair the new device, you will first need to clear the Node of all previously paired devices.

WARNING

Clearing the Node memory will also clear the pairing between the Node and Controller. After clearing, the Controller will need to be paired to the Node again.

To clear the Node of all previously paired devices:

1. Go to the RVMaster App General Settings and press **Bluetooth Connection**.
2. Press **Unpair** to unpair the Controller from the Node.

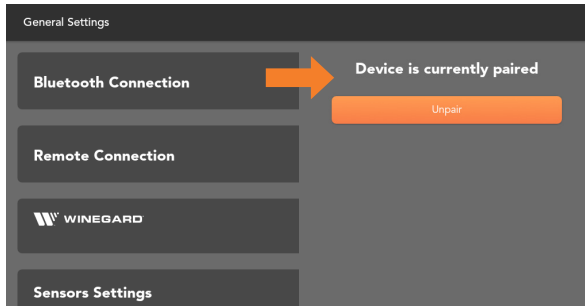


Figure 6: Unpair the Controller and Node

3. Navigate to the 'PA' function on the Controller display.
4. Press and hold the EXT button for approximately 10 seconds until the number 1 scrolls across the Controller display.
The Node is now cleared of all connected devices.



Figure 7: Navigate to 'PA' and press and hold EXT for 10 seconds to clear the Node memory

5. Pair the Controller to the Node again.
6. Pair the new device to the Node.

CONNECTING TO THE BMPRO CLOUD (IF EQUIPPED)

The RVMaster allows you to remotely connect, monitor and control your RV from your smart device.

To connect to the BMPRO Cloud for the first time:

1. Connect your Controller to the Internet via Wi-Fi.
2. Launch the RVMaster App, go to General Settings and press **Remote Connection**.
3. Press **Create account**.

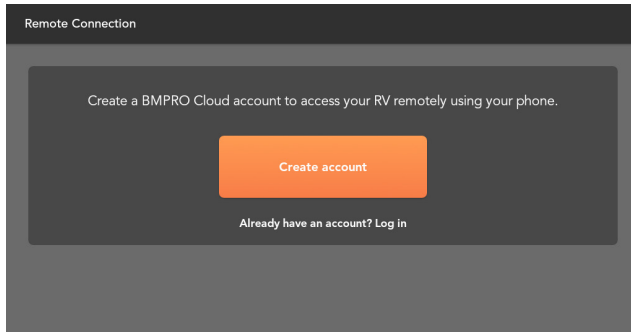


Figure 8: Create a BMPRO account or Log in if you already have one

4. Enter your Full name, Email address and a password of your choice.
Remember to keep your password in a safe place and only share details with others if you want them to access and control your RV.
5. Press **Create account**.

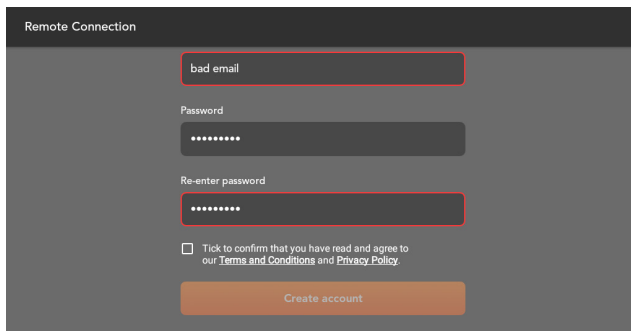


Figure 9: Enter your details then **Create account** to activate your BMPRO account

- An email will be sent to your account to verify your email address. Click on the link provided in the email to complete verification.
- Now connect your smart device using your BMPRO account details to get started.

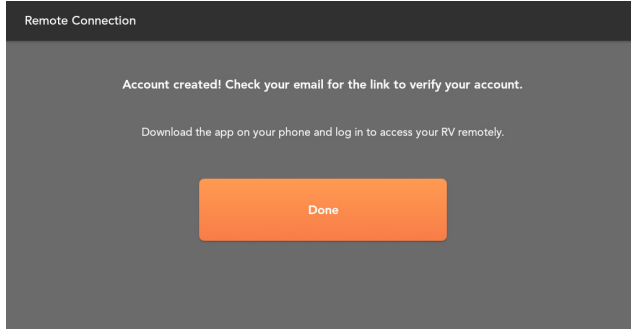


Figure 10: Account Created

Cloud Control

To control the RV from cloud, launch the APP on your smart device.

- Press **Log in to BMPRO Cloud**, or in **General Settings**, press **Remote Connection**.

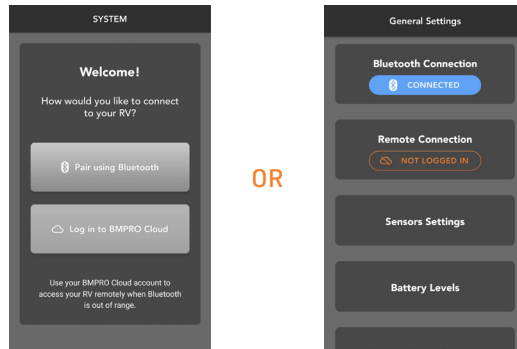
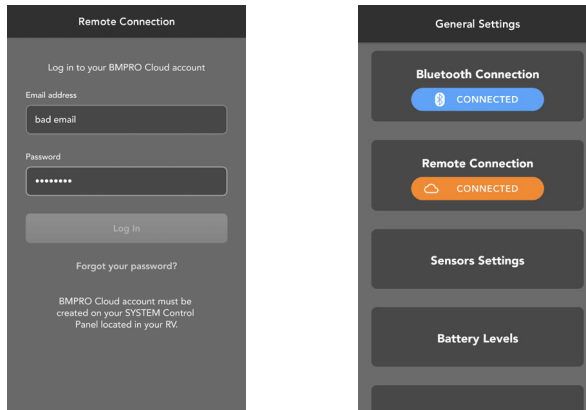


Figure 11: Logging in to the BMPRO Cloud in the RVMaster App

2. Enter the same email address and password used in the last step and press **Log in**.



SUCCESS!

Figure 12: Entering username and password in the RVMaster App

Remotely monitor and control features while in cloud control. For your safety and the prevention of unintentional damage, the motor controls and the water pump ON switch are not controlled from the cloud.

Account Not Verified

If the email address was not verified, a message will appear.

Press **RESEND VERIFICATION EMAIL** to complete the email verification process.

Forgot Your Password

If you forgot the Cloud account password, press **Forgot your password** in the login page, enter your email address and press **SEND EMAIL**.

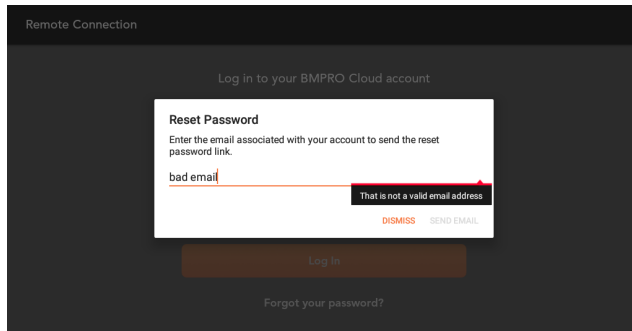


Figure 13: Reset Password

WINEGARD

To set up Winegard:

1. Go to the Settings menu.
2. Select **Winegard Settings**

Logging into Winegard network

1. Press the search button to search for the available networks.
2. Select the desired network and enter the password or enter the network name and password. If your network is not seen, make sure the Winegard is turned on and scan again.
3. After the network name and password are entered correctly, press **Join**.

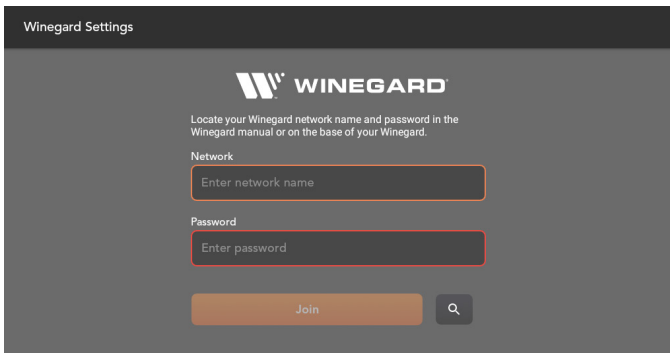


Figure 14: Winegard login

Internet Preferences

You can select from the following options:

- 📶 **4G:** Connect to a 4G network. SIM card required.
- 📶 **WiFi:** Connect to an external WiFi network.
- 📶 **Internet Off:** No internet source selected.

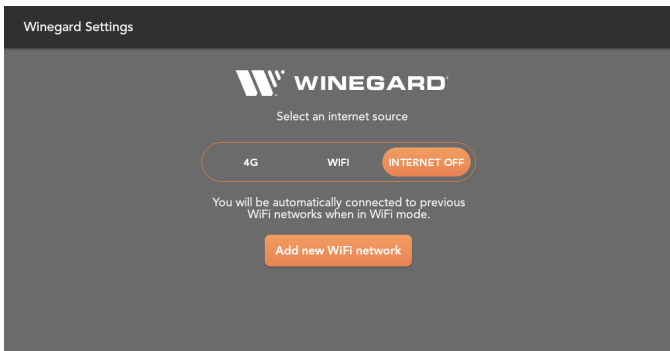


Figure 15: Winegard Internet Preferences

Winegard Status

The current status of the Winegard is displayed on the Winegard tile in the General Settings area.

- ▣ **SETUP:** This is seen when no Winegard network has been connected previously. Press the tile to connect to a Winegard network.
- ▣ **UNAVAILABLE:** This means that the Winegard network is not available and may be seen during a transition from one mode to another. If Unavailable is displayed for a long time, check that the Winegard module is ON.
- ▣ **FETCHING INFO, CONFIGURING:** This may be seen during a transition from one mode to another, e.g. changing from WiFi to 4G.
- ▣ **4G:** This is seen when the Winegard is set to 4G. The status of the network is also displayed, e.g. Connected to 4G/LTE "NetworkName Data Plan"
- ▣ **WiFi:** This is seen when the Winegard is set to WiFi. The status of the network is also displayed, e.g. Connected to WiFi "NetworkName"
- ▣ **Internet OFF:** This is seen when the Winegard is set to WiFi. The status of the network is also displayed Internet is off.

WiFi Properties

To log in to a WiFi network:

1. Press the Search button for a list of available networks and select your desired network.
2. If your network is not seen, make sure the Winegard is turned on and scan again. After the network name and password are entered correctly, press **Join**.

Save and/or forget WiFi Network

After the WiFi credentials are entered, the WiFi network will be saved.

- ▣ Press **Join** to connect last saved network.
- ▣ Press **X** to delete the saved network.

OPERATING THE RV FROM THE RVMaster APP

WARNING

Available features on the RVMaster App may vary according to the model of your recreational vehicle.

RVMaster APP HOME SCREEN

The RVMaster App home screen provides a general overview of the key features of your RV. It also provides a quick way to turn on/off all RV interior lights, water pump and the RV's climate system (model dependent), direct from the home screen.

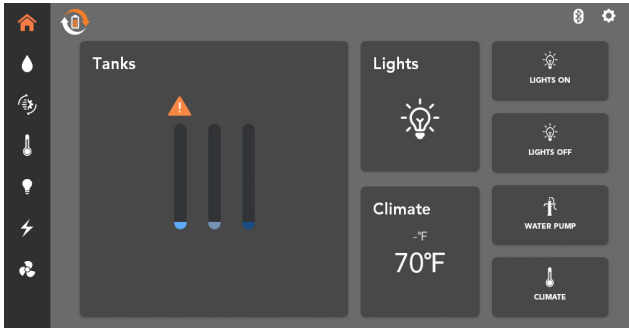


Figure 16: The RVMaster App Home Screen

TANKS SCREEN

Control water pumps, and turn water heaters and tank line heaters on and off from the Tanks screen.

If equipped, water heaters can be used with electricity or gas, either independently or together.

If a fault is detected with a water heater, a warning sign will appear. Information about the fault will be displayed in the RVMaster App.

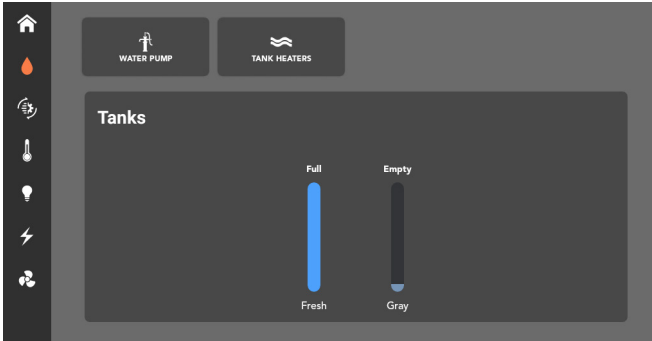


Figure 17: Tanks Screen

The water screen displays water levels in your fresh, gray and black water tanks.

The water levels are displayed as:

- ▢ Empty
- ▢ 1/3
- ▢ 2/3
- ▢ Full

MOTORS SCREEN

WARNING

Before operating any motors, ensure that the area is free from obstacles and other hazards. Please ensure that any persons near the RV are free from danger of any moving parts.

The motor screen provides access to operate any slides, awnings, bed-lifts or jacks available in the RV.

As a safety precaution, the RVMaster App will disable all motor control if the vehicle's ignition is running and the park brake is not in use.

This safety feature prevents any accidental operation of the motors while you are driving on the road.

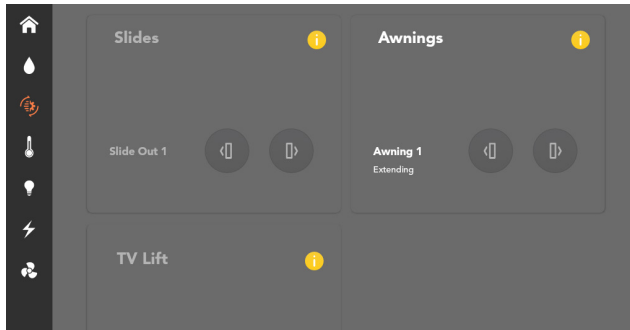


Figure 18: Ignition detected, and motor function is disabled.

Slide outs in 2022 model year RVMaster units will only operate when the engine is on and the park brake is applied. This safety feature is designed to prevent unwanted battery discharge.

All other motors will continue to be locked out whenever the ignition is on.

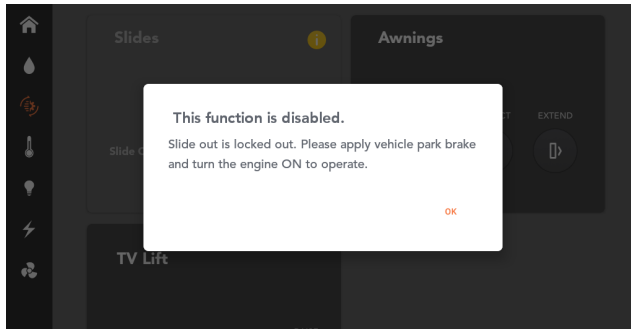


Figure 19: Slide outs locked as engine is off or park break is not applied.

Only one motor may be operated at a time. Once a motor is in operation, motor control will be disabled in any other device running the RVMaster App.

To use motors from your own device, you need to swipe to unlock the motors screen.

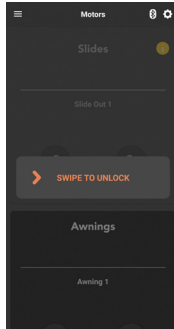


Figure 20: Swipe to unlock motors screen

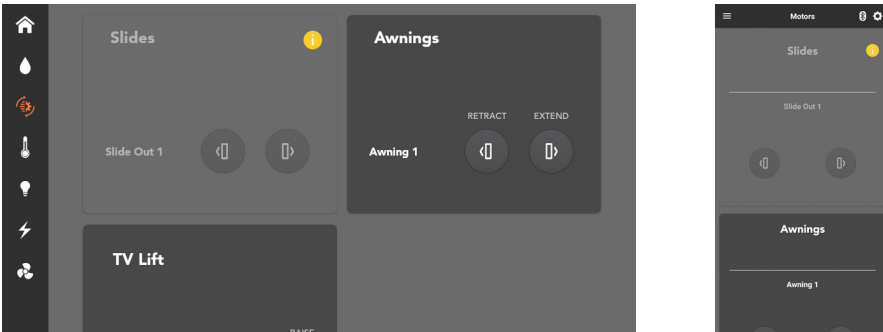


Figure 21: Motors Screen. Only one motor may be operated at a time and motor operation on other devices will be disabled.

CLIMATE SCREEN (MODEL DEPENDENT)

You can control the temperature of your RV from the climate screen.

Choose from Cool, Cool Auto or Heat to adjust temperature between 32°F to 90°F (0°C to 32°C).

Cool will continuously run the fan.

Cool Auto cycles the fan on and off with the compressor in order to achieve the target temperature.

If available, the RV may be heated from the furnace, heat pump or a combination of both. If you are using the furnace, you can also turn on the fan.

Select Fan if you wish to cool your RV without setting a specific temperature.

To set the temperature of your RV:

1. Turn climate on.
2. Select your mode of operation.
3. Adjust the temperature to your desired setting.
The desired temperature is displayed in color, below the actual temperature of the RV.
4. If you are using heat, select your heat mode.
5. If available, select your fan setting.

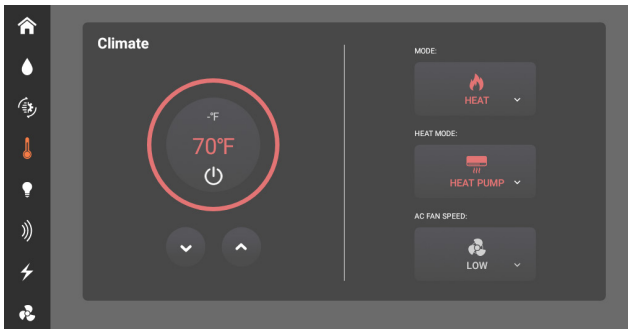


Figure 22: Climate Screen

LIGHTS SCREEN

Turn lights on and off, and if available, adjust light brightness.

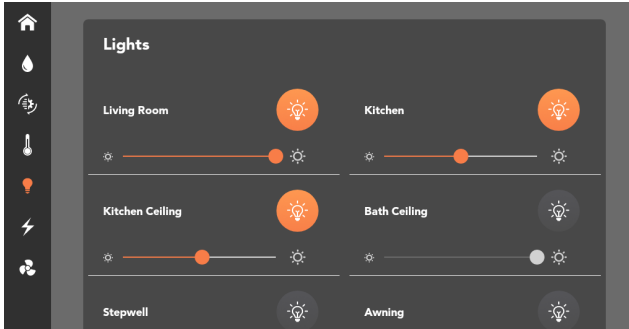


Figure 23: Lights Screen

ENERGY CENTER

Monitor coach and/or chassis voltages and gas consumption. If no coach and chassis batteries are connected, the RVMaster App will monitor the system voltage of the Node.

A warning sign will appear if voltage drops below 12V.

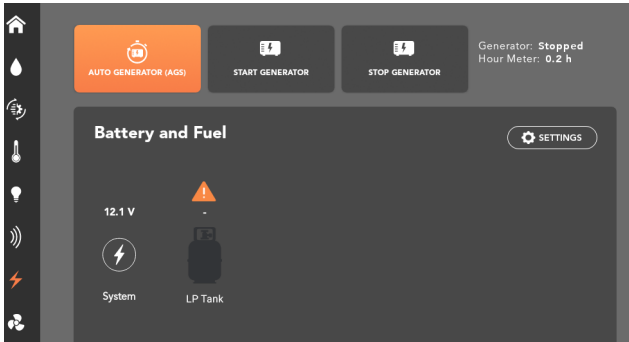


Figure 24: Energy Center

The Energy Center also permits the generator to be turned on and off as needed or enable Auto Generator Start, as well as monitor generator run time and status.

If the Generator Status (applies only to gas generators, and not to diesel generators) indicates a fault:

1. Press the **Start Generator** button.
2. Fix the fault with the generator.
3. Press the **Stop Generator** button.

If the fault has been fixed, when you next turn the generator on from the RVMaster App, the Generator Status will display "No fault".

Auto Generator Start (AGS)

To use AGS from your Controller, you may need to update the RVMaster App on the Controller.

When enabled, Auto Generator Start (AGS) will monitor battery and/or climate levels and automatically turn the generator on and off to support these functions.

To use AGS, press the **Auto Generator (AGS)** button, then swipe to turn on AGS.

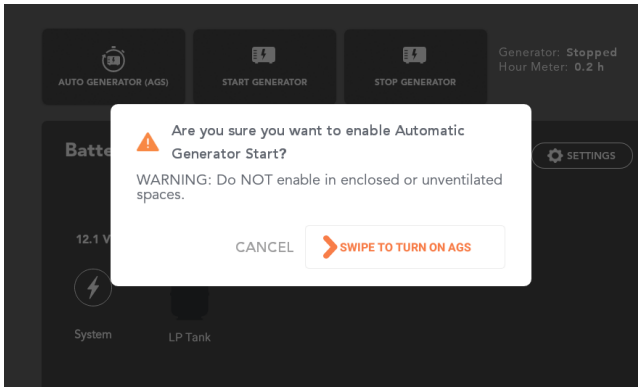


Figure 25: Auto Generator Start

If AGS is enabled and conditions determine that the generator should start to support battery and climate functions, the Node will automatically attempt to start the generator a total of four times. After four failed starts, the Node will no longer attempt to start the generator.

Please consult your generator's owner's manual if AGS fails because the generator could not be started.

Energy Settings

Press **Energy Settings** to set the parameters to control AGS usage.

USE AGS TO SUPPORT

Choose if AGS is to support battery levels, climate or both.

BATTERY LEVELS

Nominate the battery voltage (min) level which automatically starts battery charging from the generator. Battery charging stops when the target voltage is reached.

AGS monitors both system voltage and coach battery voltage and uses the greater of the two voltages to determine whether to turn the generator on or off.

RUN TIME LIMITS

Set the *minimum time* that the generator will continue to run after the goal battery voltage and/or temperature is achieved. The *maximum time* is the total run time that the generator will operate to achieve the target battery voltage and/or temperature. If targets are not achieved and the generator run time exceeds the maximum run time limit set in the Energy Settings, the generator will automatically turn off.

QUIET TIME

Quiet Time allows you to choose the hours when the generator will always be turned off, even if AGS has been enabled.

WARNING

If using Quiet Time, please ensure that time is correct on the Controller. For more help on setting the time, refer to **FAQs and Troubleshooting**.

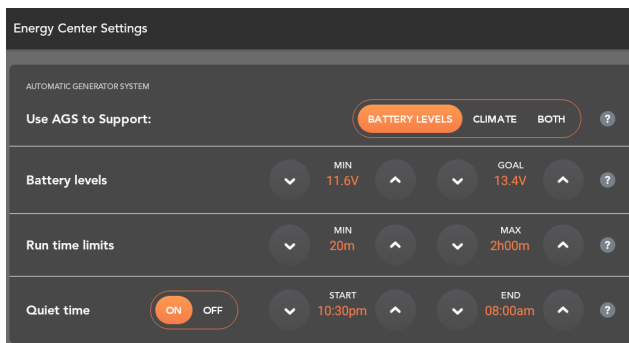


Figure 26: AGS Energy Center Settings

SOLAR CONTROLLER

When solar is connected to a compatible RVC controller, the Solar Controller screen allows you to view the status of any connected solar panels.

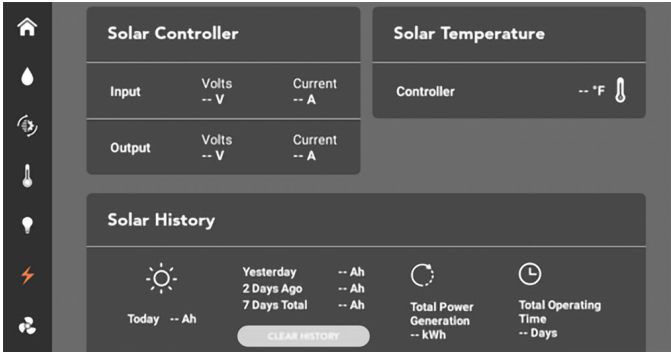


FIGURE 27: Solar Controller Screen

Solar Controller

This section displays the input voltage and current from the solar panel and the output voltage and current of the battery.

Solar Temperature

This section displays the solar controller regulator and battery temperature.

If no battery sensor is present, the battery temperature can be hidden from view.

The temperature can be displayed in either °F or °C, depending on what preference has been set in the App's General Settings.

Solar History

This section displays the total electric charge produced in ampere hours for today, yesterday, and two days ago, and the total charge produced over the last seven days.

Electric charge is displayed in ampere hours.

The total power generation is displayed in kilowatt-hours.

Clear History

The Clear History button will clear all the solar history, including the total power generation and total operating days.

FANS AND VENTS SCREEN

Turn kitchen and bathroom fans on and off, and if available, operate any bathroom and kitchen vents.

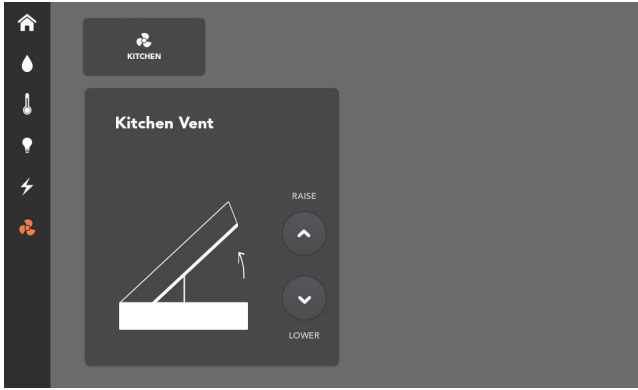



Figure 28: Fans and Vents Screen

GENERAL SETTINGS

The General Settings may be accessed by pressing the Settings icon  on the RVMaster App homescreen.

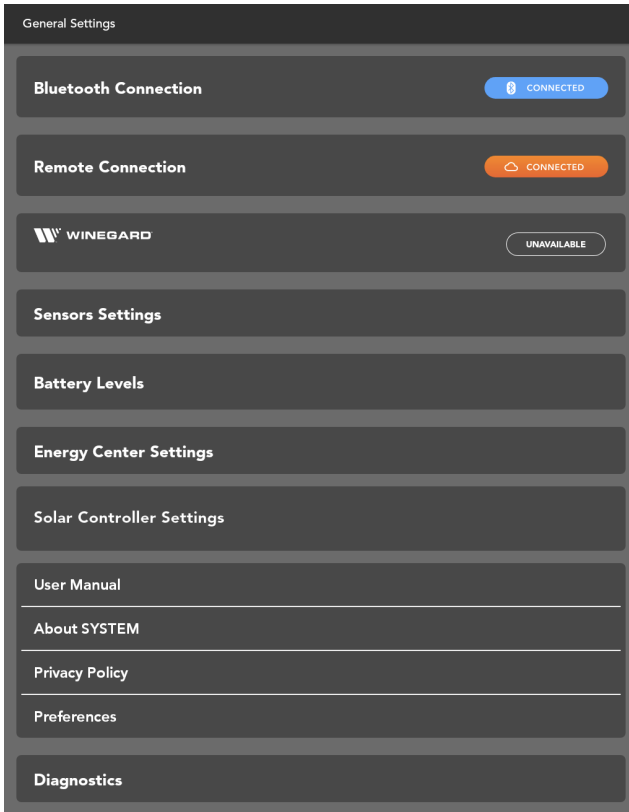


Figure 29: General Settings Screen

Use General Settings to:


- ▣ Check the **Bluetooth Connection** between the Node and Controller.
- ▣ Log in to the BMAPRO Cloud using a **Remote Connection**.
- ▣ Enter the **Winegard** network name and password to connect to the internet.
- ▣ Set **Sensors Settings**, allowing for the setting of tire pressure sensor underpressure and over-temperature limits.
- ▣ Check the wireless **Battery Levels** of any installed Switch.
- ▣ View **Energy Center Settings**.
- ▣ View **Solar Controller Settings**.
- ▣ Access a digital version of the **User Manual**.

- ▣ View information **About SYSTEM**: all about the RVMaster system, Node firmware version, RVMaster App version, etc.
- ▣ Access BPRO's **Privacy Policy**.
- ▣ Set your unit **Preferences** for temperature and pressure.

Solar Controller Settings

The Solar Controller Settings are used to configure the Solar Controller to your liking.

To access Solar Controller Settings:

1. From the App home screen, press the Settings icon .
2. Press **Solar Controller Settings**.

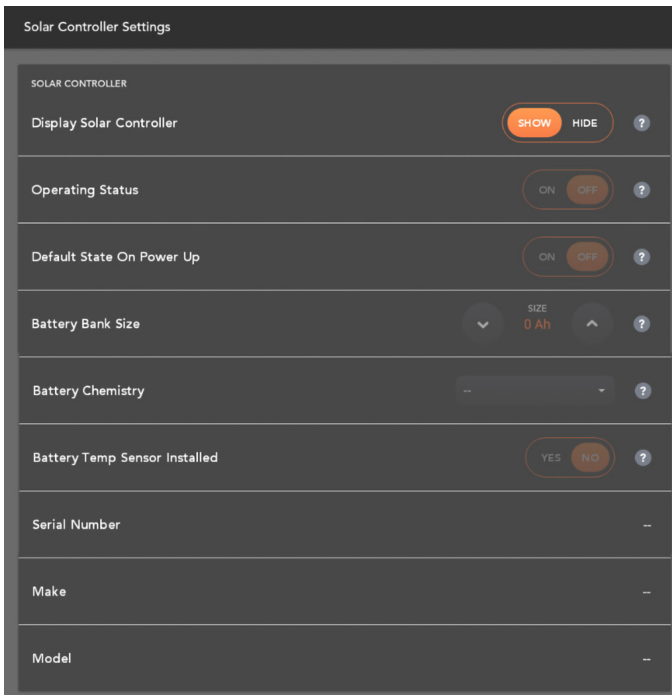


FIGURE 30: Solar Controller Settings Tablet Screen

DISPLAY SOLAR CONTROLLER

Allows you to toggle Solar Controller information to be hidden if you do not want it to be displayed in the App.

If Solar Controller information is hidden, you can toggle it to be displayed.

OPERATING STATUS

Displays the current operating status of the Solar Controller.

DEFAULT STATE ON POWER UP

Displays the default state of the Solar Controller when powered up.

BATTERY BANK SIZE

Allows you to set your battery bank size.

BATTERY CHEMISTRY

Displays your battery chemistry.

BATTERY TEMP SENSOR INSTALLED

Displays if a battery temperature sensor is installed.

SERIAL NUMBER

Displays the Solar Controller serial number.

MAKE

Displays the Solar Controller make.

MODEL

Displays the Solar Controller model number.

NODE

FIRMWARE UPDATES

The Node will receive updates over-the-air, meaning you will always get the latest feature updates immediately, without needing to bring your RV to your local RV dealer.

WARNING

To keep the Node updated, make sure that the Controller is connected to the internet.

When there is an update to the Node it will begin updating immediately. Please keep the Node powered while it is updating.

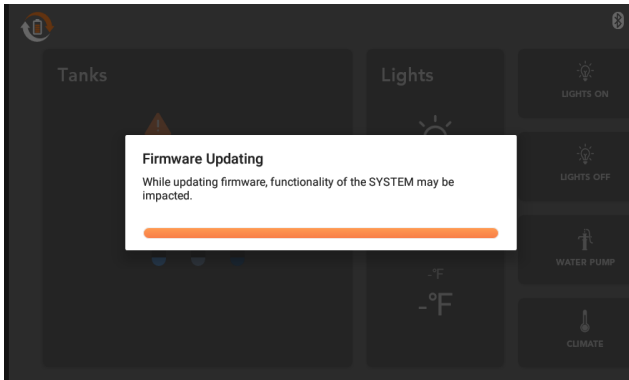


Figure 31: Node firmware update

Notifications to update the Node firmware may be received after updating the RVMaster App on the Controller. These updates cannot be postponed.

While the Node is powered, update the Node at the prompt to ensure that the Node is compatible with the RVMaster App.

SWITCH

The Switch is an optional wall switch available in three types of configurations to suit your RV. The Switch communicates by Bluetooth to the Node to provide additional control of RV features and accessories.

Any Switch installed in your RV will have been paired to the Node at the factory and is ready to use immediately.

REPLACING THE BATTERY IN YOUR SWITCH

The Switch is powered by a standard, 3V Lithium Cell coin battery (CR2032). You can check if the battery needs replacing from the RVMaster App General Settings. Open the BLE Wall Switches settings, then press any button on the switch whose battery you are checking. The RVMaster App will refresh with the switch battery status.

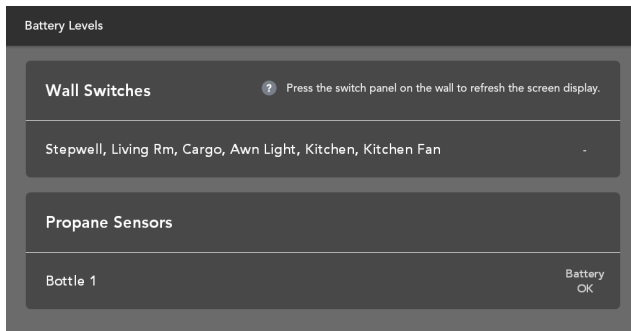


Figure 32: Battery Levels Screen

To replace the battery, unclip the Switch button pad.

You may need a flathead screwdriver or similar to pry open the Switch button pad, and to remove the battery from the battery holder.

Insert the new battery in the battery holder with the positive side facing up.

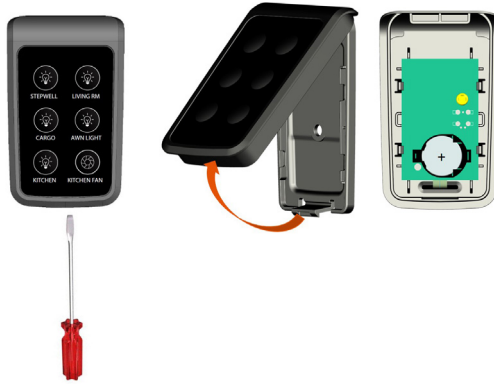


Figure 33: Accessing the battery in the Switch



FAQS AND TROUBLESHOOTING

Need more help troubleshooting your RVMaster? Email our customer service team at service@teambmpro.com

CONTROLLER AND APP


Does the Controller connect to Wi-Fi?

Yes, the Controller can connect to your local Wi-Fi network:


1. Press the Main screen icon  to return to the Controller main screen.
2. From the main screen, press the Settings icon. 
3. Press **Network & Internet** and then **Wi-Fi**, then choose and connect to your Wi-Fi network.

How do I update the RVMaster App on my Controller?

If the Controller is connected to the internet and logged into a Google account, it may automatically receive RVMaster App updates and notifications.



RVMaster App updates may also be searched from the Google Play Store. Open Google Play  and search for RVMaster to find the latest app updates.

How do I create a Google account?

If you don't have a Google account, you may create one by pressing the Google Play icon  on the Controller main screen and following the prompts.

How do I change the time on my Controller?

To change the date and time on your Controller:

1. Press the Main screen icon  to return to the Controller main screen.
2. From the main screen, press the Settings icon. 
3. Press **Systems** and then **Date & Time** to adjust the date, time or time zone.

I can't use my Controller and why does it display **BB**?

The Controller will show **BB** on its menu display if there is a system error which prevents the use of the RVMaster system.

If you encounter an **BB** error, please contact your local RV dealership for further assistance.



Figure 34: The **BB** error

I've left my RV on for a few days; now the screen on my Controller is blank and I can't use the RVMaster App?

The Controller will go to sleep if it has been left on for more than 48 hours and not been used in that time.

Touching the screen will not wake up the Controller. To wake up the Controller and use the RVMaster App again:

1. Using the < or > buttons on the Controller, navigate to the 'OF' function.



Figure 35: Navigate to the 'OF' function

2. Press EXT to wake the display on the Controller.
This will put the RVMaster in standby mode and turn off the lights.



Figure 36: Press EXT to wake the display


3. Press  to take the RVMaster out of standby mode and begin using the RVMaster App.



Figure 37: Press 1 to use the RVMaster

I've launched the RVMaster App on my Controller but the app is not starting?

If booting the RVMaster and the RVMaster App is then launched, wait three minutes for the Node to communicate to the Controller and for the app to start. If the RVMaster App still has issues starting and is frozen on the logo page, clear the app data on the Controller then relaunch the app.

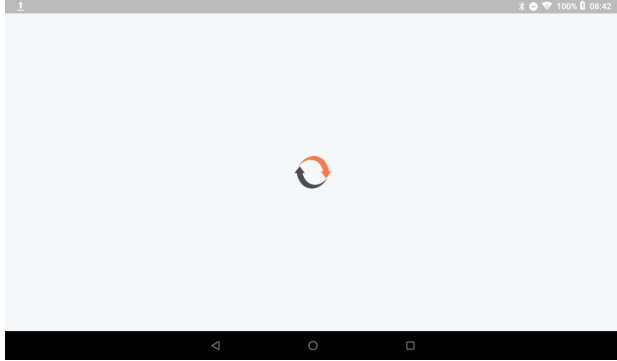





Figure 38: RVMaster App not starting

To clear the app data:

1. Press the Recent applications  icon and close the RVMaster App.
2. Press the Main screen icon  to return to the Controller main screen.
3. From the main screen, press the Settings icon. 
4. Press **Apps & notifications** and then **See all apps**.
5. Scroll to find the RVMaster App icon and press to select.
6. Press **Storage**.

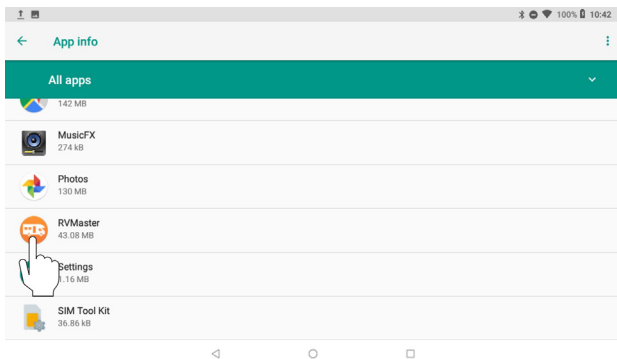


Figure 39: Select the RVMaster App from the list of apps

7. Press **Clear Data** and press **OK** at the prompt to clear the RVMaster App data.
8. Return to the Main screen and relaunch the RVMaster App.

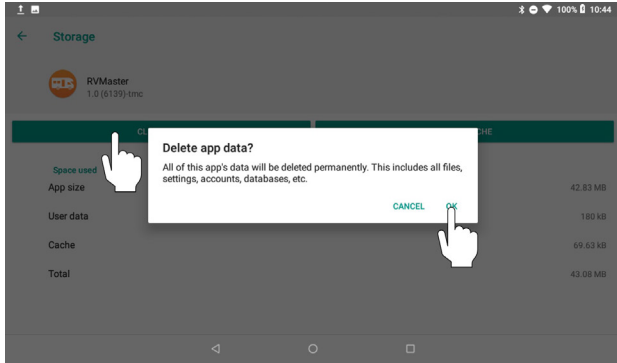


Figure 40: Clear RVMaster App data

I am receiving a shore power fault message, what do I do?

If the Node has been connected to a faulty power source, the following error message will display on the Controller or RVMaster App:

SHORE POWER FAULT! The power cord has been connected to a faulty power source. Power will not be restored until connected to a properly working source.

A warning icon will also appear at the top of the page. ⚠️

You will not be able to continue using your RVMaster until the Node is connected to a non-faulty power source.

PAIRING WITH THE NODE

I tried pairing my smartphone to the Node but it didn't connect?

If pairing failed try the following before attempting to pair your smartphone again:

1. Toggle the smartphone's Bluetooth off and on.
2. Restart the RVMaster App.
3. Cycle power to the Node off and on by disconnecting RV shore power or if available in your RV, cycling the battery isolation switch off and on.

If the above does not solve the problem, go to the RVMaster App General Settings and unpair your smartphone. Then follow the instructions in **Clearing the Node** to clear the Node memory of any previously connected devices. Pair your smartphone again.



WARNING

If you clear the Node remember to pair with the Controller again.

I tried pairing my smartphone to the Node but the Controller displays --?

When pairing to the Node if the Controller displays --, the Node is already paired to four devices and cannot support anymore devices.

Follow the instructions in **Clearing the Node**, then pair your smartphone. Don't forget to also pair the Controller again.

SWITCH

I've replaced the Switch in my RV, but it doesn't work?

You need to pair the Switch to the Node before you can use the switch.

The Switch is paired to the Node in four steps:

1. Using the < or > buttons on the Controller, navigate to the 'PA' menu item.



Figure 41: Use < or > to navigate to the 'PA' menu item

2. When 'PA' appears on the display, press the RET button to start the pairing process between the Switch and Node.



Figure 42: Press RET to start pairing

3. Press any two buttons on the Switch at the same time.



Figure 43: Press any two buttons on the Switch

4. Press EXT on the Controller to accept the pairing of the Switch to the Node.



Figure 44: Press EXT to accept pairing

SPECIFICATIONS

Node Specifications	
Input Voltage Range	8V-15V DC
Ambient Temperature	-4°F to 140°F (-20°C to 60°C)
IP Rating	IP20
Approvals	FCC 47 CR15.109, CAN ICES-3 (B) / NMB-3 (B), IEC 61000-4-2 Level III, IEC60068-2-27 Table A.1, IEC 60068-2-64 Spectrum A.3 Category 1

Controller Specifications	
Input Voltage Range	8V-15V DC
Ambient Temperature	-4°F to 140°F (-20°C to 60°C)
IP Rating	IP40
Approvals	FCC 47 CFR 15.109, CAN ICES-3 (B) / NMB-3 (B), IEC 61000-4-2 Level III, IEC60068-2-27 Table A.1, IEC 60068-2-64 Spectrum A.3 Category 1

Switch Specifications	
Input Voltage Range	2.2V-3.4V DC
IP Rating	IP40
Approvals	FCC 47 CFR 15.109, CAN ICES-3 (B) / NMB-3 (B), IEC 61000-4-2 Level III, IEC60068-2-27 Table A.1, IEC 60068-2-64 Spectrum A.3 Category 1

LIMITED WARRANTY TERMS AND CONDITIONS

Registering your BMPRO product is an important step to ensure that you receive all the benefits you are entitled to. Please visit teambmp.com to complete the online registration form for your new product today.

What this Limited Warranty Covers

This warranty covers any defect or malfunction in your BMPRO product. Under this warranty you are entitled to have such goods replaced, repaired or refunded.

What this Limited Warranty Does Not Cover

This warranty does not extend to product failures or defects caused by, or associated with, but not limited to:

- Failure to install or maintain correctly, unsuitable physical or operating environment, accident, acts of God, hazard, misuse, unauthorized repair, modification or alteration, natural disaster, corrosive environment, insect or vermin infestation and failure to comply with any additional instructions supplied with the product.
- BMPRO may seek reimbursement of any costs incurred when a product is found to be in proper working order or damaged as a result of any of the warranty exclusions listed above.
- BMPRO will not be liable for any costs, charges or expenses incurred in the process of returning a product to initiate a warranty claim.

How Long the Warranty Lasts

BMPRO warrants products against defects for a period of two years, commencing from the original date of purchase.

Claims Process

Proof of purchase is required before the product can be deemed to be within the warranty period.

To enquire or make a claim under this warranty, please follow these steps:

A. Prior to returning a BMPRO product, please email service@teambmp.com to obtain a Return Material Authorisation (RMA) number.

B. Package and send the product to:

**BMPRO WARRANTY DEPARTMENT
UNIT 1 821 E WINDSOR AVE
ELKHART IN 46514**

Please mark RMA details on the outside of the packaging.

C. Please ensure the package also includes: a copy of the proof of purchase, a detailed description of the fault and your contact details including phone number and return address.

How State Law Applies

This warranty gives you specific legal rights, and you may also have other rights which vary from state to state.

POWERING YOUR ADVENTURES.



**TEAM
BM PRO
.COM**

BM PRO
service@teambmpro.com
Unit 1, 821 E Windsor Ave, Elkhart IN 46514 USA
teambmpro.com